

## PCBD1 RABBIT PAB

**Cat.#:** S219182

**Product Name:** Anti-PCBD1 Rabbit Polyclonal Antibody

**Synonyms:** PCD; PHS; DCOH; PCBD

**UNIPROT ID:** P61457 (Gene Accession - BC006324 )

**Background:** This gene encodes a member of the pterin-4- $\alpha$ -carbinolamine dehydratase family. The encoded protein has been identified as a moonlighting protein based on its ability to perform mechanistically distinct functions. The encoded protein functions as both a dehydratase involved in tetrahydrobiopterin biosynthesis, and as a cofactor for HNF1A-dependent transcription. A deficiency of this enzyme leads to hyperphenylalaninemia. Alternative splicing results in multiple transcript variants.

**Immunogen:** Fusion protein of human PCBD1

**Applications:** ELISA, WB, IHC

**Recommended Dilutions:** IHC: 50-300;WB: 500-2000;ELISA: 5000-10000

**Host Species:** Rabbit

**Clonality:** Rabbit Polyclonal

**Isotype:** Immunogen-specific rabbit IgG

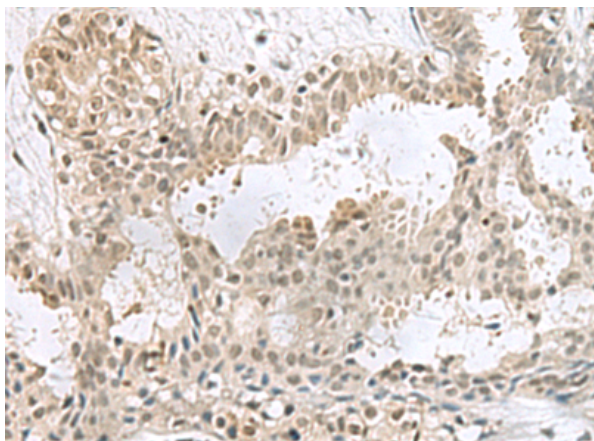
**Purification:** Antigen affinity purification

**Species Reactivity:** Human, Mouse, Rat

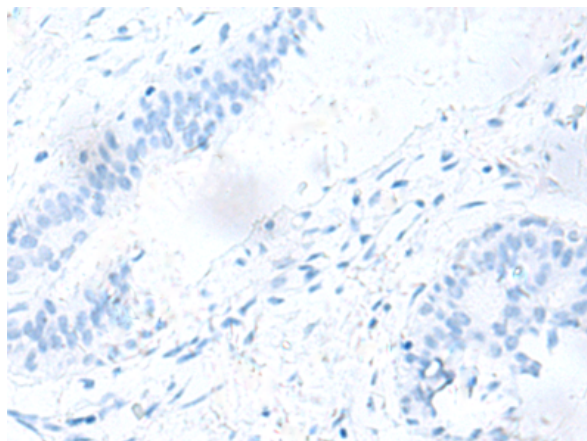
**Constituents:** PBS (without Mg<sup>2+</sup> and Ca<sup>2+</sup>), pH 7.4, 150 mM NaCl, 0.05% Sodium Azide and 40% glycerol

**Research Areas:** Metabolism, Epigenetics and Nuclear Signaling

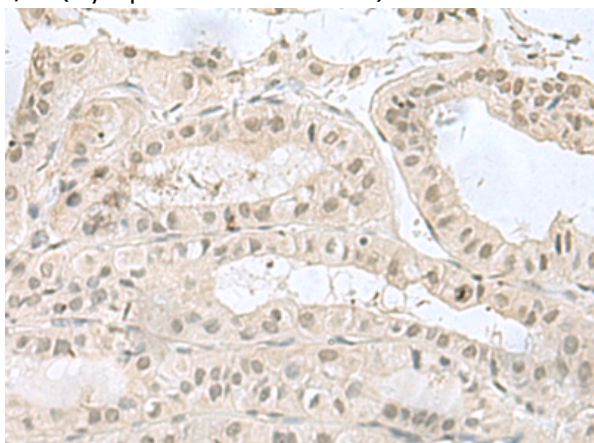
**Storage & Shipping:** Store at -20°C. Avoid repeated freezing and thawing



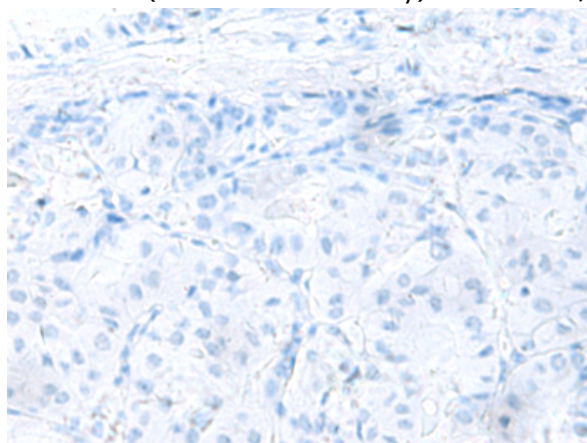
Immunohistochemistry analysis of paraffin embedded Human breast cancer tissue using 219182(PCBD1 Antibody) at a dilution of 1/60(Cytoplasm and Nucleus).



In comparison with the IHC on the left, the same paraffin-embedded Human breast cancer tissue is first treated with the fusion protein and then with 219182(Anti-PCBD1 Antibody) at dilution 1/60.



The image on the left is immunohistochemistry of In paraffin-embedded Human thyroid cancer tissue using 219182(Anti-PCBD1 Antibody) at a dilution of 1/60.



In comparison with the IHC on the left, the same paraffin-embedded Human thyroid cancer tissue is first treated with fusion protein and then with D226009(Anti-PCBD1 Antibody) at dilution 1/60.

kDa

72 —  
55 —  
  
36 —  
28 —  
  
17 —  
10 —



Gel: 12%SDS-PAGE, Lysate: 40 µg;  
Lane: Mouse kidney tissue lysate;  
Primary antibody: 219182(PCBD1 Antibody) at dilution 1/800;  
Secondary antibody: HRP-conjugated Goat anti rabbit IgG at 1/5000 dilution;  
Exposure time: 1 minute



# Product Description

Pioneering GTPase and Oncogene Product Development since 2010

---