

PAXIP1 RABBIT PAB

Cat.#: S218913

Product Name: Anti-PAXIP1 Rabbit Polyclonal Antibody

Synonyms: PTIP; TNRC2; CAGF28; CAGF29; PACIP1; PAXIP1L

UNIPROT ID: Q6ZW49 (Gene Accession - BC033781)

Background: This gene is a member of the paired box (PAX) gene family and encodes a nuclear protein with six BRCT (breast cancer carboxy-terminal) domains. This protein plays a critical role in maintaining genome stability, condensation of chromatin and progression through mitosis.

Immunogen: Fusion protein of human PAXIP1

Applications: ELISA, IHC

Recommended Dilutions: IHC: 50-200; ELISA: 5000-10000

Host Species: Rabbit

Clonality: Rabbit Polyclonal

Isotype: Immunogen-specific rabbit IgG

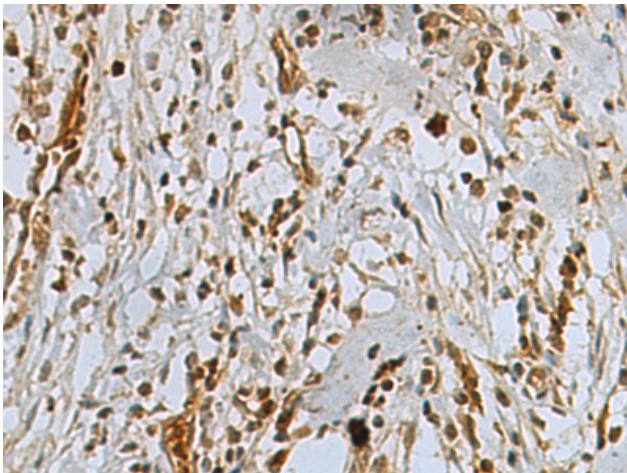
Purification: Antigen affinity purification

Species Reactivity: Human, Mouse

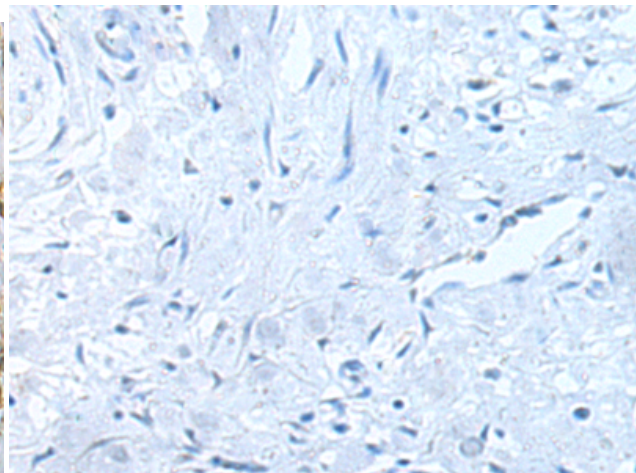
Constituents: PBS (without Mg²⁺ and Ca²⁺), pH 7.4, 150 mM NaCl, 0.05% Sodium Azide and 40% glycerol

Research Areas: Epigenetics and Nuclear Signaling

Storage & Shipping: Store at -20°C. Avoid repeated freezing and thawing



Immunohistochemistry analysis of paraffin embedded Human gastric cancer tissue using 218913(PAXIP1 Antibody) at a dilution of 1/80(Nucleus).



In comparison with the IHC on the left, the same paraffin-embedded Human gastric cancer tissue is first treated with the fusion protein and then with 218913(Anti-PAXIP1 Antibody) at dilution 1/80.