

PAX9 RABBIT PAB

Cat.#: S213709

Product Name: Anti-PAX9 Rabbit Polyclonal Antibody

Synonyms: STHAG3

UNIPROT ID: P55771 (Gene Accession - NP_006185)

Background: This gene is a member of the paired box (PAX) family of transcription factors. Members of this gene family typically contain a paired box domain, an octapeptide, and a paired-type homeodomain. These genes play critical roles during fetal development and cancer growth. The specific function of the paired box 9 gene is unknown but it may involve development of stratified squamous epithelia as well as various organs and skeletal elements.

Immunogen: Synthetic peptide of human PAX9

Applications: ELISA, IHC

Recommended Dilutions: IHC: 25-100; ELISA: 1000-2000

Host Species: Rabbit

Clonality: Rabbit Polyclonal

Isotype: Immunogen-specific rabbit IgG

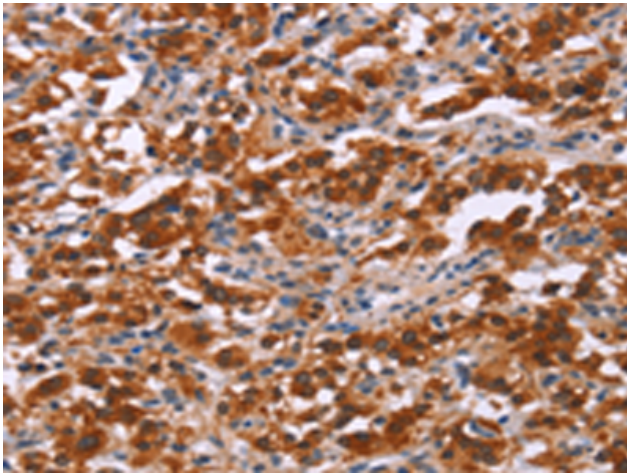
Purification: Antigen affinity purification

Species Reactivity: Human, Mouse, Rat

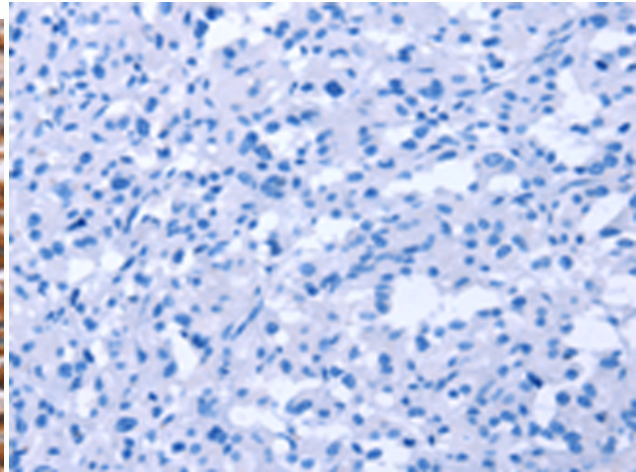
Constituents: PBS (without Mg²⁺ and Ca²⁺), pH 7.4, 150 mM NaCl, 0.05% Sodium Azide and 40% glycerol

Research Areas: Epigenetics and Nuclear Signaling

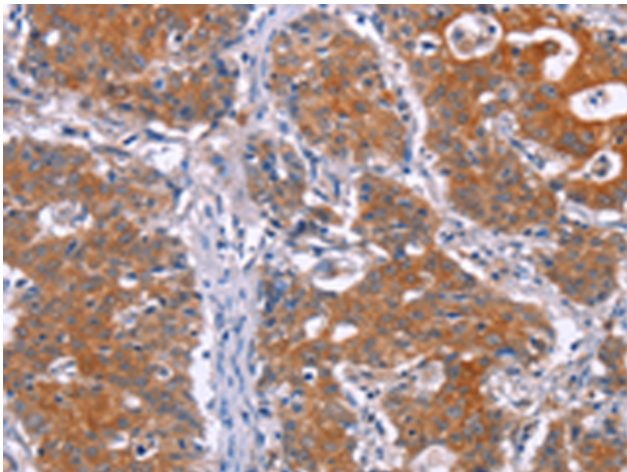
Storage & Shipping: Store at -20°C. Avoid repeated freezing and thawing



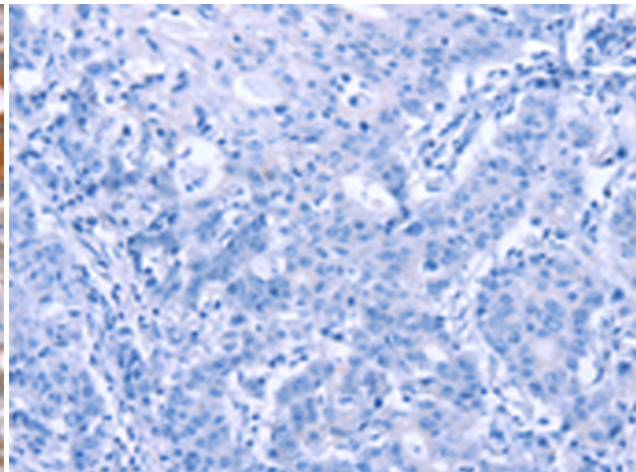
Immunohistochemistry analysis of paraffin embedded Human thyroid cancer tissue using 213709(PAX9 Antibody) at a dilution of 1/25(Cytoplasm).



In comparison with the IHC on the left, the same paraffin-embedded Human thyroid cancer tissue is first treated with the synthetic peptide and then with 213709(Anti-PAX9 Antibody) at dilution 1/25.



The image on the left is immunohistochemistry of paraffin-embedded Human gastric cancer tissue using 213709(Anti-PAX9 Antibody) at a dilution of 1/25.



In comparison with the IHC on the left, the same paraffin-embedded Human gastric cancer tissue is first treated with synthetic peptide and then with D160700(Anti-PAX9 Antibody) at dilution 1/25.