

PARP8 RABBIT PAB

Cat.#: S220782

Product Name: Anti-PARP8 Rabbit Polyclonal Antibody

Synonyms: ARTD16; pART16

UNIPROT ID: Q8N3A8 (Gene Accession - NP_001171526)

Background: Enables protein ADP-ribosylase activity. Involved in protein auto-ADP-ribosylation and protein mono-ADP-ribosylation. [provided by Alliance of Genome Resources, Apr 2022]

Immunogen: Synthetic peptide of human PARP8

Applications: ELISA, IHC

Recommended Dilutions: IHC: 50-200; ELISA: 5000-10000

Host Species: Rabbit

Clonality: Rabbit Polyclonal

Isotype: Immunogen-specific rabbit IgG

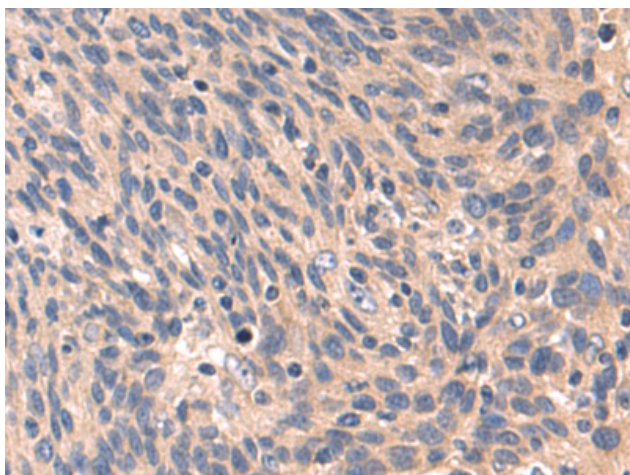
Purification: Antigen affinity purification

Species Reactivity: Human, Mouse

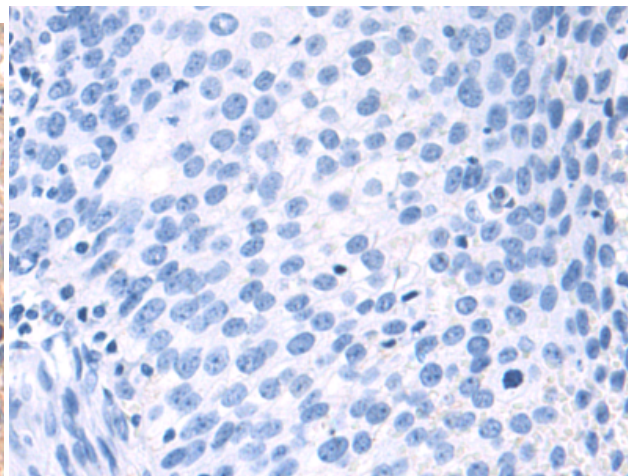
Constituents: PBS (without Mg²⁺ and Ca²⁺), pH 7.4, 150 mM NaCl, 0.05% Sodium Azide and 40% glycerol

Research Areas: Epigenetics and Nuclear Signaling

Storage & Shipping: Store at -20°C. Avoid repeated freezing and thawing



Immunohistochemistry analysis of paraffin embedded Human cervical cancer tissue using 220782(PARP8 Antibody) at a dilution of 1/60(Cytoplasm).



In comparison with the IHC on the left, the same paraffin-embedded Human cervical cancer tissue is first treated with the synthetic peptide and then with 220782(Anti-PARP8 Antibody) at dilution 1/60.