

PARP2 RABBIT PAB

Cat.#: S222383

Product Name: Anti-PARP2 Rabbit Polyclonal Antibody

Synonyms: ARTD2; ADPRT2; PARP-2; ADPRTL2; ADPRTL3; pADPRT-2

UNIPROT ID: Q9UGN5 (Gene Accession - NP_001036083)

Background: This gene encodes poly(ADP-ribose)transferase-like 2 protein, which contains a catalytic domain and is capable of catalyzing a poly(ADP-ribose)ation reaction. This protein has a catalytic domain which is homologous to that of poly (ADP-ribose) transferase, but lacks an N-terminal DNA binding domain which activates the C-terminal catalytic domain of poly (ADP-ribose) transferase. The basic residues within the N-terminal region of this protein may bear potential DNA-binding properties, and may be involved in the nuclear and/or nucleolar targeting of the protein. Two alternatively spliced transcript variants encoding distinct isoforms have been found.

Immunogen: Synthetic peptide of human PARP2

Applications: ELISA, IHC

Recommended Dilutions: IHC: 50-100; ELISA: 5000-10000

Host Species: Rabbit

Clonality: Rabbit Polyclonal

Isotype: Immunogen-specific rabbit IgG

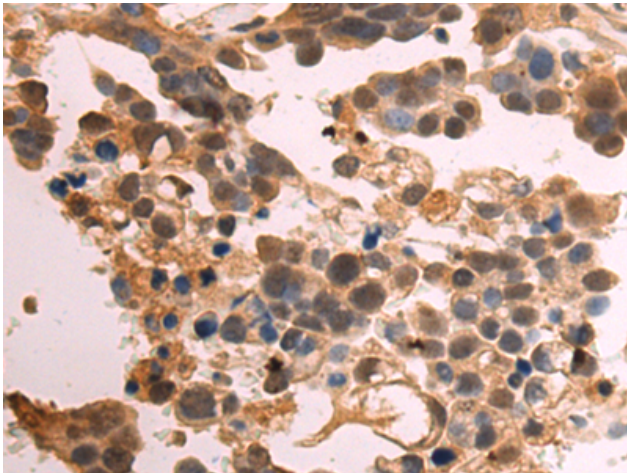
Purification: Antigen affinity purification

Species Reactivity: Human, Mouse

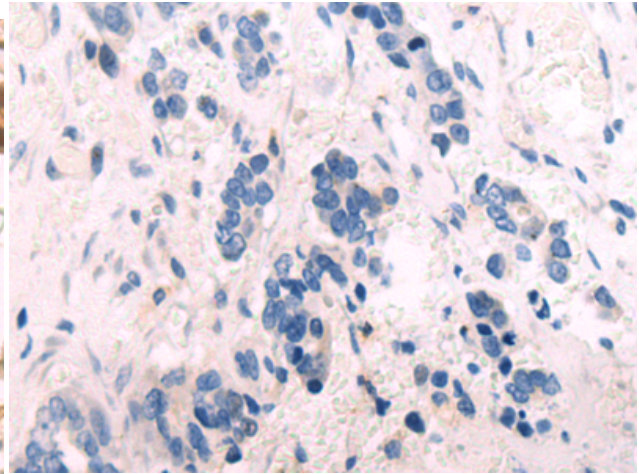
Constituents: PBS (without Mg²⁺ and Ca²⁺), pH 7.4, 150 mM NaCl, 0.05% Sodium Azide and 40% glycerol

Research Areas: Epigenetics and Nuclear Signaling

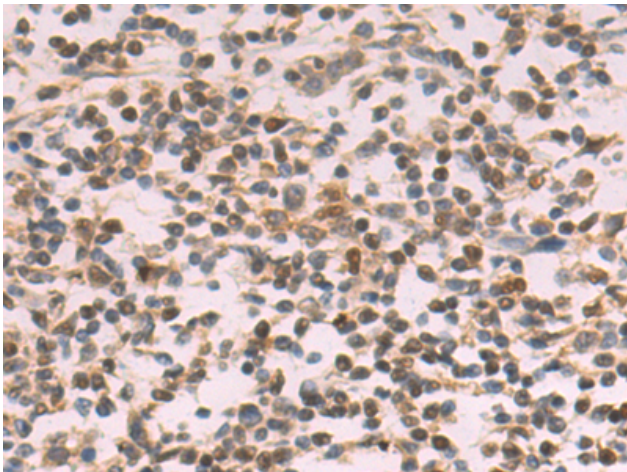
Storage & Shipping: Store at -20°C. Avoid repeated freezing and thawing



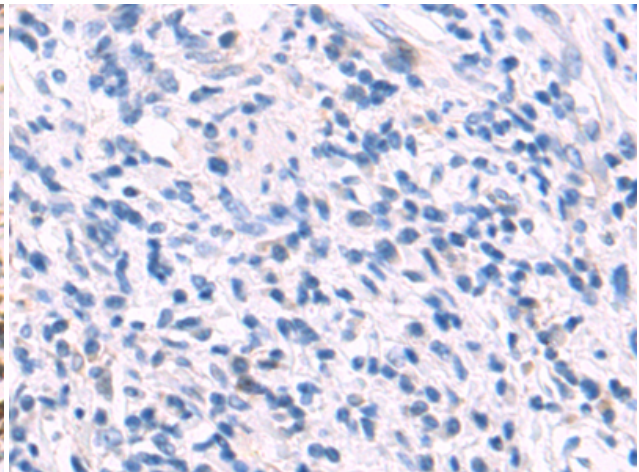
Immunohistochemistry analysis of paraffin embedded Human colorectal cancer tissue using 222383 (PARP2 Antibody) at a dilution of 1/50 (Cytoplasm and Nucleus).



In comparison with the IHC on the left, the same paraffin-embedded Human colorectal cancer tissue is first treated with the synthetic peptide and then with 222383 (Anti-PARP2 Antibody) at dilution 1/50.



The image on the left is immunohistochemistry of paraffin-embedded Human gastric cancer tissue using 222383 (Anti-PARP2 Antibody) at a dilution of 1/50.



In comparison with the IHC on the left, the same paraffin-embedded Human gastric cancer tissue is first treated with synthetic peptide and then with D264516 (Anti-PARP2 Antibody) at dilution 1/50.