

## PARP1 RABBIT PAB

**Cat.#:** S220165

**Product Name:** Anti-PARP1 Rabbit Polyclonal Antibody

**Synonyms:** PARP; PARS; PPOL; ADPRT; ARTD1; ADPRT1; PARP-1; ADPRT 1; pADPRT-1; Poly-PARP

**UNIPROT ID:** P09874 (Gene Accession - NP\_001609.2 )

**Background:** This gene encodes a chromatin-associated enzyme, poly(ADP-ribosyl)transferase, which modifies various nuclear proteins by poly(ADP-ribosyl)ation. The modification is dependent on DNA and is involved in the regulation of various important cellular processes such as differentiation, proliferation, and tumor transformation and also in the regulation of the molecular events involved in the recovery of cell from DNA damage. In addition, this enzyme may be the site of mutation in Fanconi anemia, and may participate in the pathophysiology of type I diabetes.

**Immunogen:** Synthetic peptide of human PARP1

**Applications:** ELISA, WB, IHC

**Recommended Dilutions:** IHC: 50-200;WB: 500-2000;ELISA: 2000-5000

**Host Species:** Rabbit

**Clonality:** Rabbit Polyclonal

**Isotype:** Immunogen-specific rabbit IgG

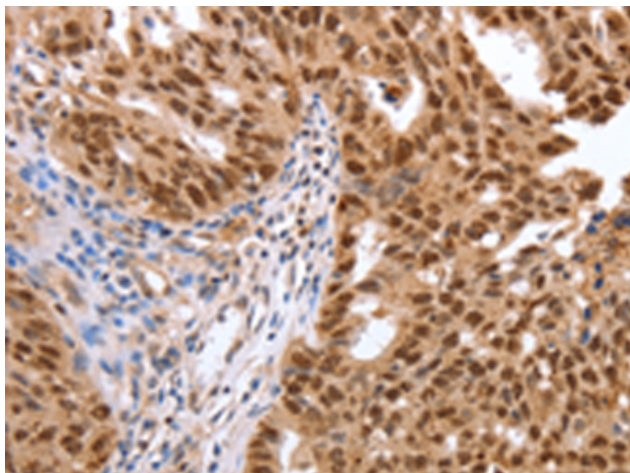
**Purification:** Antigen affinity purification

**Species Reactivity:** Human, Mouse, Rat

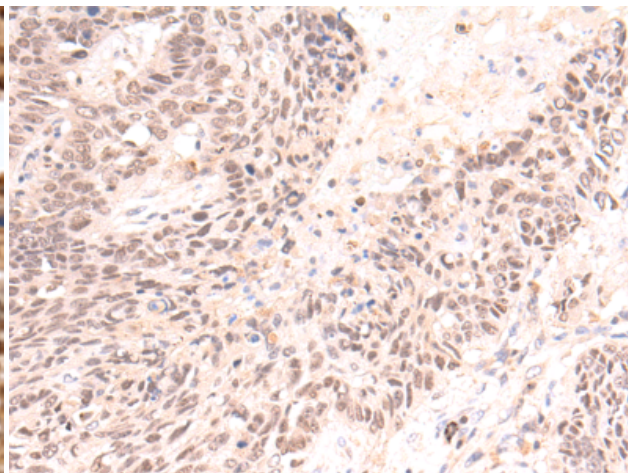
**Constituents:** PBS (without Mg<sup>2+</sup> and Ca<sup>2+</sup>), pH 7.4, 150 mM NaCl, 0.05% Sodium Azide and 40% glycerol

**Research Areas:** Epigenetics and Nuclear Signaling, Cancer

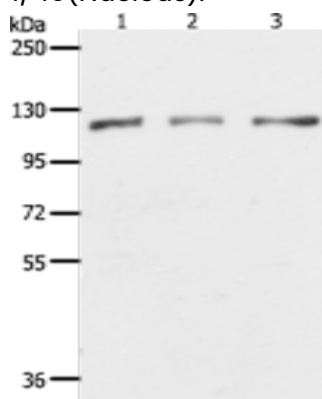
**Storage & Shipping:** Store at -20°C. Avoid repeated freezing and thawing



Immunohistochemistry analysis of paraffin-embedded Human tonsil tissue using 220165(PARP1 Antibody) at a dilution of 1/40(Nucleus).



Immunohistochemistry analysis of paraffin-embedded Human lung cancer tissue using 220165(Anti-PARP1 Antibody) at a dilution of 1/40.



Gel: 8%SDS-PAGE, Lysate: 40  $\mu$ g;  
Lane 1-3: HeLa, K562 and Jurkat cell lysates;  
Primary antibody: 220165(PARP1 Antibody) at dilution 1/350;  
Secondary antibody: Goat anti rabbit IgG at 1/8000 dilution;  
Exposure time: 1 second