

PAPPA-AS1 RABBIT PAB

Cat.#: S221501

Product Name: Anti-PAPPA-AS1 Rabbit Polyclonal Antibody

Synonyms: DIPAS; TAF4B; PAPPAS; TAF2C2; PAPPAAS; PAPPA-AS; TAFII05; NCRNA00156

UNIPROT ID: Q5QFB9 (Gene Accession - AAV41519)

Background: PAPP A was originally isolated from pregnancy serum as heterotetrameric protein complex with molecular weight approximately 500 kDa, consisting of two PAPP A subunits disulfide-linked with two subunits of the proform of eosinophil major basic protein (proMBP). In such a complex proMBP functions as an inhibitor of PAPP A proteinase activity. PAPP A is widely used as a marker of some pathologies during pregnancy. Reduced level of PAPP A in pregnancy blood in the first trimester is associated with fetal Down syndrome. PAPP A is considered as one of the best biochemical markers in early pregnancy used to screen for Down syndrome during the first trimester (Wald, N. J. et al).

Immunogen: Synthetic peptide of human PAPPA-AS1

Applications: ELISA, IHC

Recommended Dilutions: IHC: 20-100; ELISA: 5000-10000

Host Species: Rabbit

Clonality: Rabbit Polyclonal

Isotype: Immunogen-specific rabbit IgG

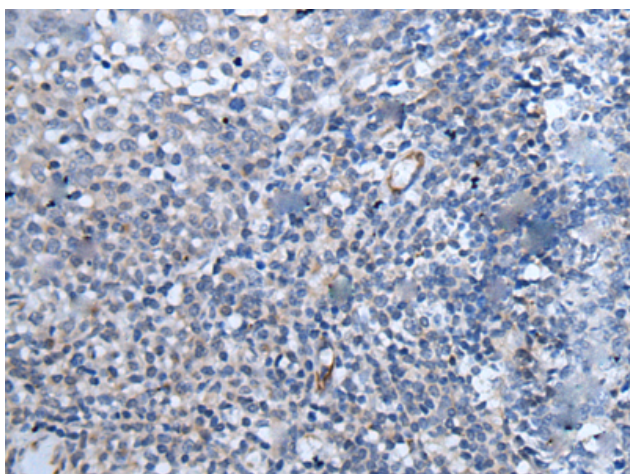
Purification: Antigen affinity purification

Species Reactivity: Human

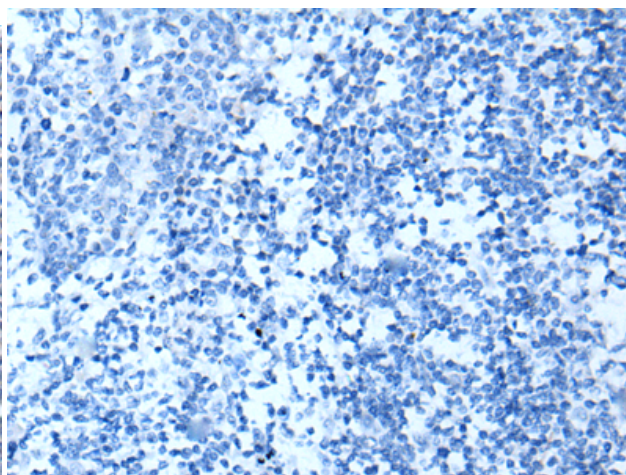
Constituents: PBS (without Mg²⁺ and Ca²⁺), pH 7.4, 150 mM NaCl, 0.05% Sodium Azide and 40% glycerol

Research Areas: Cell Biology

Storage & Shipping: Store at -20°C. Avoid repeated freezing and thawing



Immunohistochemistry analysis of paraffin embedded Human tonsil tissue using 221501(PAPPA-AS1 Antibody) at a dilution of 1/35(Cell membrane).



In comparison with the IHC on the left, the same paraffin-embedded Human tonsil tissue is first treated with the synthetic peptide and then with 221501(Anti-PAPPA-AS1 Antibody) at dilution 1/35.



Product Description

Pioneering GTPase and Oncogene Product Development since 2010
