

PAM16 RABBIT PAB

Cat.#: S219194

Product Name: Anti-PAM16 Rabbit Polyclonal Antibody

Synonyms: TIM16; MAGMAS; SMDMDM; TIMM16; CGI-136

UNIPROT ID: Q9Y3D7 (Gene Accession - BC005024)

Background: This gene encodes a mitochondrial protein involved in granulocyte-macrophage colony-stimulating factor (GM-CSF) signaling. This protein also plays a role in the import of nuclear-encoded mitochondrial proteins into the mitochondrial matrix and may be important in reactive oxygen species (ROS) homeostasis. Mutations in this gene cause Megarbane-Dagher-Melike type spondylometaphyseal dysplasia, an early lethal skeletal dysplasia characterized by short stature, developmental delay and other skeletal abnormalities.

Immunogen: Fusion protein of human PAM16

Applications: ELISA, WB, IHC

Recommended Dilutions: IHC: 50-200;WB: 500-2000;ELISA: 5000-10000

Host Species: Rabbit

Clonality: Rabbit Polyclonal

Isotype: Immunogen-specific rabbit IgG

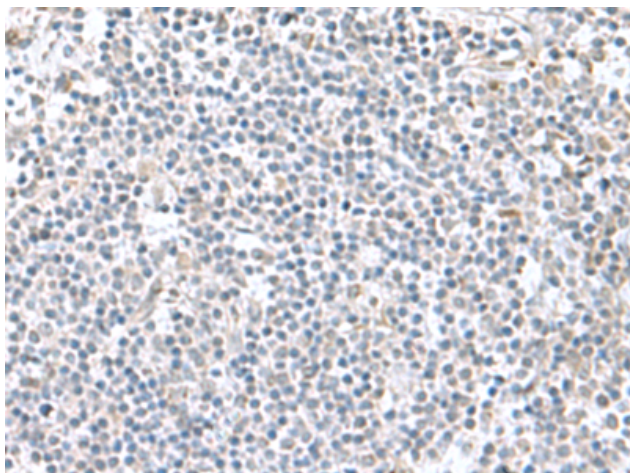
Purification: Antigen affinity purification

Species Reactivity: Human, Mouse

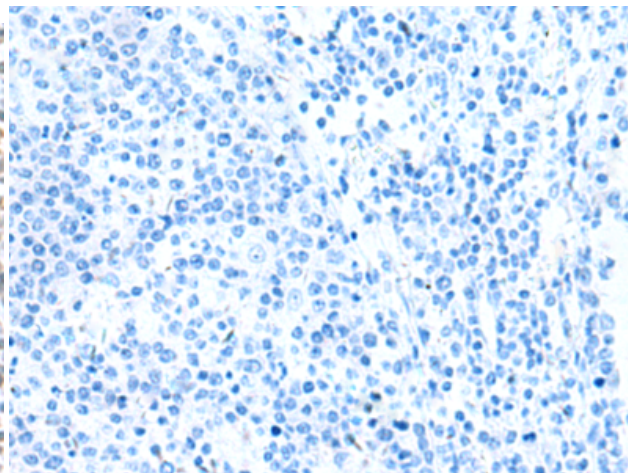
Constituents: PBS (without Mg²⁺ and Ca²⁺), pH 7.4, 150 mM NaCl, 0.05% Sodium Azide and 40% glycerol

Research Areas: Signal Transduction

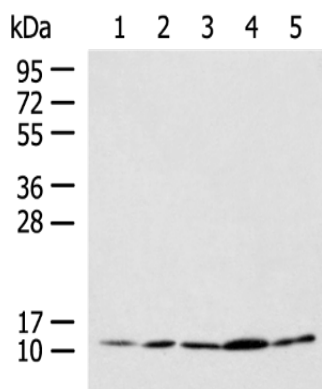
Storage & Shipping: Store at -20°C. Avoid repeated freezing and thawing



Immunohistochemistry analysis of paraffin embedded Human tonsil tissue using 219194 (PAM16 Antibody) at a dilution of 1/60 (Cytoplasm).



In comparison with the IHC on the left, the same paraffin-embedded Human tonsil tissue is first treated with the fusion protein and then with 219194 (Anti-PAM16 Antibody) at dilution 1/60.



Gel: 12% SDS-PAGE, Lysate: 40 μ g;
 Lane 1-5: HL-60, Hela, Jurkat, LNCAP, HepG2 cell lysates;
 Primary antibody: 219194 (PAM16 Antibody) at dilution 1/900;
 Secondary antibody: HRP-conjugated Goat anti rabbit IgG at 1/5000 dilution;
 Exposure time: 1 minute