

P2Y6 RABBIT MAB

Cat.#: N261605

Product Name: Anti-P2Y6 Rabbit Monoclonal Antibody

Synonyms: P2ry6; P2Y6; P2Y6 receptor; PP2891

UNIPROT ID: Q15077

Background: Receptor for extracellular UDP > UTP > ATP. The activity of this receptor is mediated by G proteins which activate a phosphatidylinositol-calcium second messenger system.

Immunogen: A synthetic peptide of human P2Y6

Applications: WB,IHC-F,IHC-P,ICC/IF,IP

Recommended Dilutions: WB: 1/500-1/1000 IHC: 1/50-1/100 IF: 1/50-1/200 IP: 1/20

Host Species: Rabbit

Clonality: Rabbit Monoclonal

Clone ID: R06-4D8

MW: Calculated MW: 36 kDa; Observed MW: 36 kDa

Isotype: IgG

Purification: Affinity Purified

Species Reactivity: Human

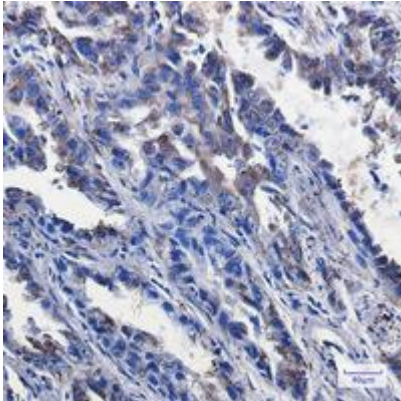
Conjugation: Unconjugated

Modification: Unmodified

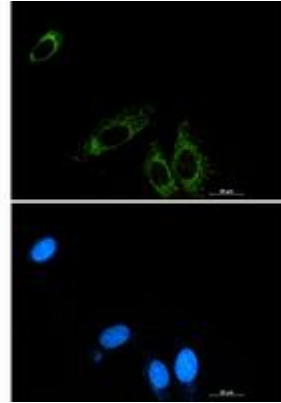
Constituents: PBS (without Mg²⁺ and Ca²⁺), pH 7.3 containing 50% glycerol, 0.5% BSA and 0.02% sodium azide

Research Areas: NeuroscienceyyyyyP2Y6

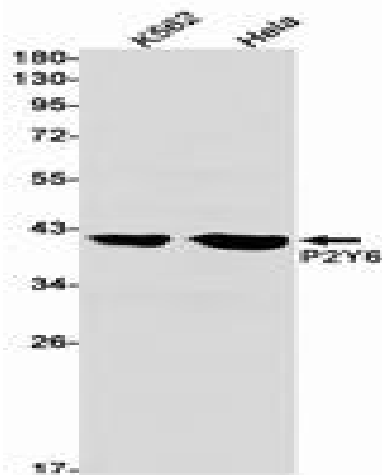
Storage & Shipping: Store at -20°C. Avoid repeated freezing and thawing



Immunohistochemistry analysis of paraffin-embedded Human lung cancer tissue using P2Y6 antibody. High-pressure and temperature Sodium Citrate pH 6.0 was used for antigen retrieval.



Immunocytochemistry analysis of P2Y6 (green) in A549 using P2Y6 antibody, and DAPI (blue).



Western blot analysis of P2Y6 in K562, Hela lysates using P2Y6 antibody.