

P27 KIP 1 RABBIT MAB

Cat.#: N263474

Product Name: Anti-p27 Kip 1 Rabbit Monoclonal Antibody

Synonyms: p27; Kip1; p27Kip1; AA408329; A1843786

UNIPROT ID: P46414

Background: Important regulator of cell cycle progression. Inhibits the kinase activity of CDK2 bound to cyclin A, but has little inhibitory activity on CDK2 bound to SPDYA (By similarity).

Immunogen: Recombinant protein of mouse p27 KIP 1

Applications: WB,IHC-P,IP

Recommended Dilutions: WB: 1/500-1/1000 IHC: 1/50-1/100 IP: 1/20

Host Species: Rabbit

Clonality: Rabbit Monoclonal

Clone ID: R06-2E5

MW: Calculated MW: 22 kDa; Observed MW: 27 kDa

Isotype: IgG

Purification: Affinity Purified

Species Reactivity: Human,Mouse

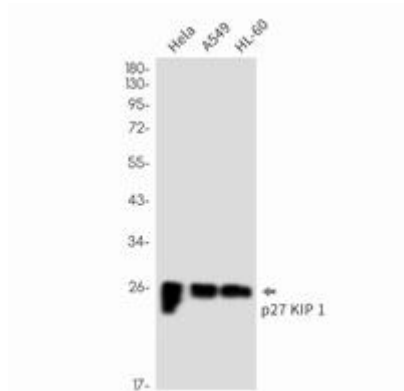
Conjugation: Unconjugated

Modification: Unmodified

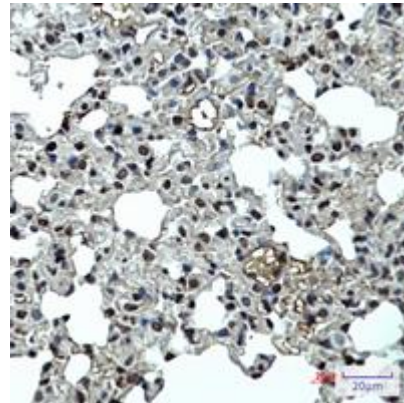
Constituents: PBS (without Mg²⁺ and Ca²⁺), pH 7.3 containing 50% glycerol, 0.5% BSA and 0.02% sodium azide

Research Areas: Cell Biology

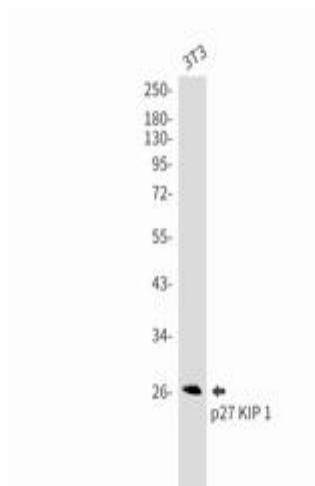
Storage & Shipping: Store at -20°C. Avoid repeated freezing and thawing



Western blot analysis of p27 KIP 1 in HeLa, A549, HL-60 lysates using p27 KIP 1 antibody



Immunohistochemistry analysis of paraffin-embedded mouse lung using p27 Kip 1 antibody. High-pressure and temperature Sodium Citrate pH 6.0 was used for antigen retrieval.



Western blot analysis of p27 KIP 1 in 3T3 lysates using p27 KIP 1 antibody.