

## P23 RABBIT MAB

**Cat.#:** N263473

**Product Name:** Anti-p23 Rabbit Monoclonal Antibody

**Synonyms:** PTGES3; P23; TEBP; Prostaglandin E synthase 3; Cytosolic prostaglandin E2 synthase; cPGES; Hsp90 co-chaperone; Progesterone receptor complex p23; Telomerase-binding protein p23

**UNIPROT ID:** Q15185

**Background:** Molecular chaperone that localizes to genomic response elements in a hormone-dependent manner and disrupts receptor-mediated transcriptional activation, by promoting disassembly of transcriptional regulatory complexes.

**Immunogen:** A synthetic peptide of human p23/PTGES3

**Applications:** WB, ICC/IF, IP

**Recommended Dilutions:** WB: 1/500-1/1000 IF: 1/50-1/200 IP: 1/20

**Host Species:** Rabbit

**Clonality:** Rabbit Monoclonal

**Clone ID:** R03-2A6

**MW:** Calculated MW: 19 kDa; Observed MW: 23 kDa

**Isotype:** IgG

**Purification:** Affinity Purified

**Species Reactivity:** Human, Mouse, Rat

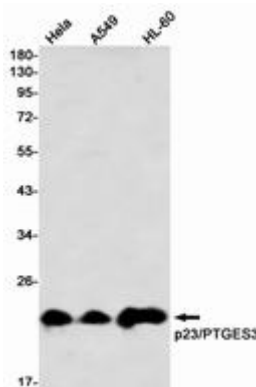
**Conjugation:** Unconjugated

**Modification:** Unmodified

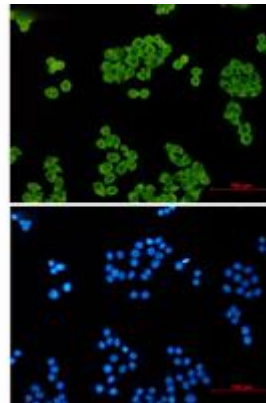
**Constituents:** PBS (without Mg<sup>2+</sup> and Ca<sup>2+</sup>), pH 7.3 containing 50% glycerol, 0.5% BSA and 0.02% sodium azide

**Research Areas:** Epigenetics and Nuclear Signaling

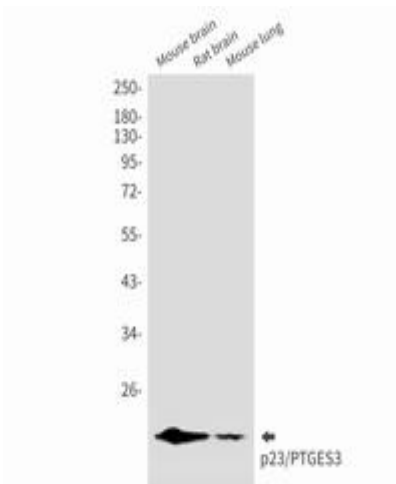
**Storage & Shipping:** Store at -20°C. Avoid repeated freezing and thawing



Western blot analysis of p23/PTGES3 in HeLa, A549, HL-60 lysates using p23/PTGES3 antibody



Immunocytochemistry analysis of p23 (green) in HeLa using p23 antibody, and DAPI (blue).



Western blot analysis of p23/PTGES3 in mouse brain, rat brain, mouse lung lysates using p23/PTGES3 antibody.