

P16 ARC RABBIT MAB

Cat.#: N261700

Product Name: Anti-p16 ARC Rabbit Monoclonal Antibody

Synonyms: p16 Arc; ARPC5; ARC16; Arp2/3 protein complex subunit p16

UNIPROT ID: O15511

Background: Functions as component of the Arp2/3 complex which is involved in regulation of actin polymerization and together with an activating nucleation-promoting factor (NPF) mediates the formation of branched actin networks.

Immunogen: A synthetic peptide of human p16 ARC

Applications: WB,IHC-P,IP

Recommended Dilutions: WB: 1/500-1/1000 IHC: 1/50-1/100 IP: 1/20

Host Species: Rabbit

Clonality: Rabbit Monoclonal

Clone ID: R08-2B3

MW: Calculated MW: 16 kDa; Observed MW: 16 kDa

Isotype: IgG

Purification: Affinity Purified

Species Reactivity: Human,Mouse,Rat

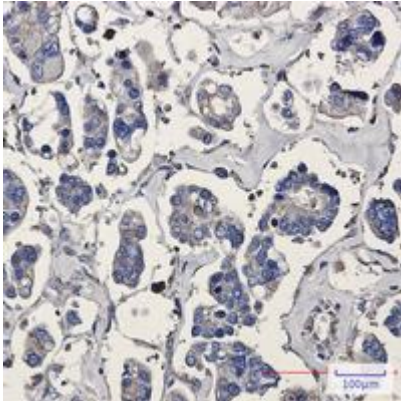
Conjugation: Unconjugated

Modification: Unmodified

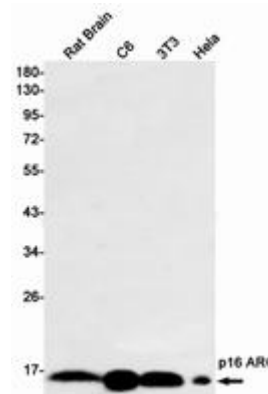
Constituents: PBS (without Mg²⁺ and Ca²⁺), pH 7.3 containing 50% glycerol, 0.5% BSA and 0.02% sodium azide

Research Areas: Signal Transduction

Storage & Shipping: Store at -20°C. Avoid repeated freezing and thawing



Immunohistochemistry analysis of paraffin-embedded Human Cholangiocarcinoma using p16 ARC antibody. High-pressure and temperature Sodium Citrate pH 6.0 was used for antigen retrieval.



Western blot analysis of p16 ARC in rat Brain, C6, 3T3, HeLa lysates using p16 ARC antibody.