

OTUD7B RABBIT PAB

Cat.#: S221727

Product Name: Anti-OTUD7B Rabbit Polyclonal Antibody

Synonyms: ZA20D1; CEZANNE

UNIPROT ID: Q6GQQ9 (Gene Accession - NP_064590)

Background: OTUD7B (OTU domain-containing protein 7B), also known as ZA20D1 or Cezanne, is an 843 amino acid protein that localizes to both the nucleus and the cytoplasm. Expressed in a variety of tissues, including liver, kidney, heart and immature B-cells, OTUD7B functions to hydrolyze branched and linear forms of polyubiquitin, specifically deubiquinating Lys-48- and Lys-63-linked polyubiquitin chains. Via its ability to deubiquinate target proteins, OTUD7B regulates the inflammatory response within the cell and may play a role in cell survival. More specifically, OTUD7B forms a negative feedback loop in pro-inflammatory signaling, thereby suppressing NF κ B activity and helping to resolve inflammatory responses. OTUD7B contains one C-terminal A20-type zinc finger, one OTU domain and one N-terminal TRAF-binding domain through which it conveys its deubiquitinating activity.

Immunogen: Synthetic peptide of human OTUD7B

Applications: ELISA, IHC

Recommended Dilutions: IHC: 20-100; ELISA: 5000-10000

Host Species: Rabbit

Clonality: Rabbit Polyclonal

Isotype: Immunogen-specific rabbit IgG

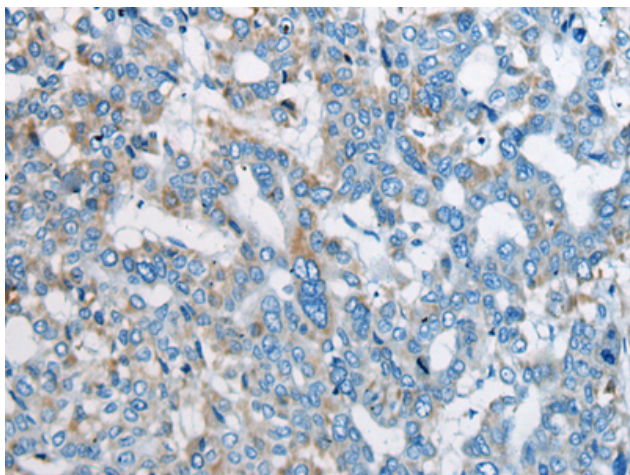
Purification: Antigen affinity purification

Species Reactivity: Human, Mouse

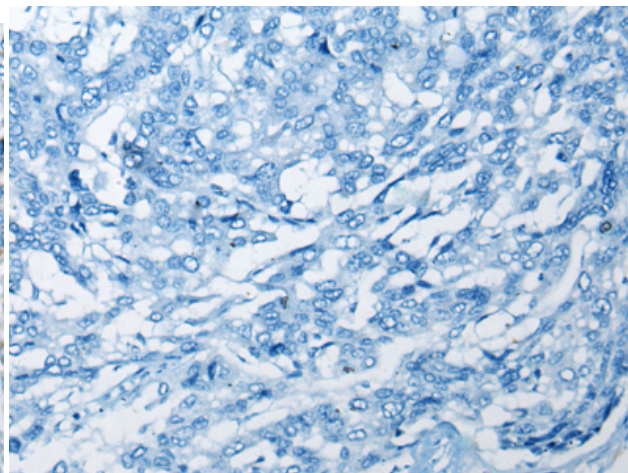
Constituents: PBS (without Mg²⁺ and Ca²⁺), pH 7.4, 150 mM NaCl, 0.05% Sodium Azide and 40% glycerol

Research Areas: Signal Transduction, Epigenetics and Nuclear Signaling, Cell Biology

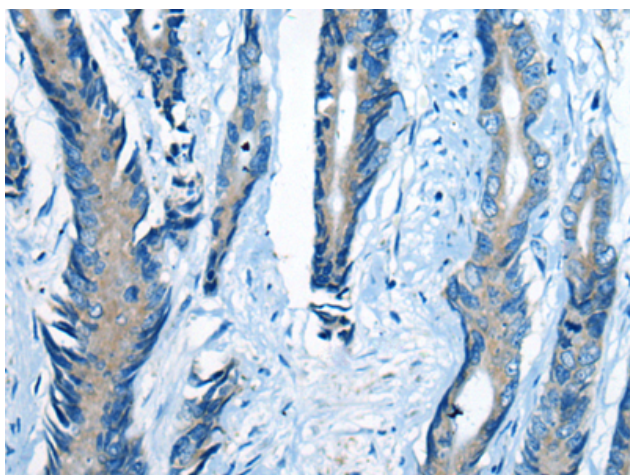
Storage & Shipping: Store at -20°C. Avoid repeated freezing and thawing



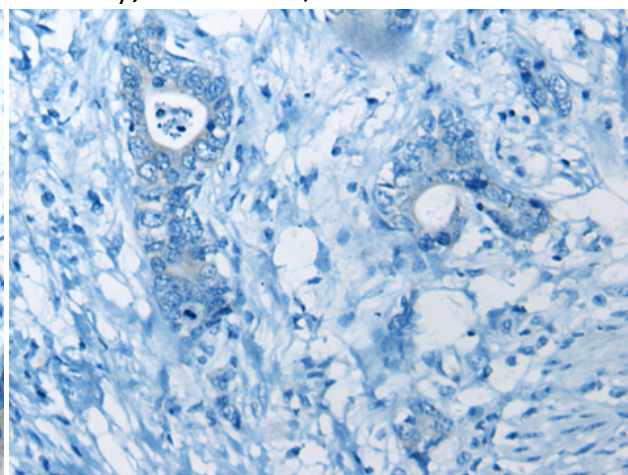
Immunohistochemistry analysis of paraffin embedded Human liver cancer tissue using 221727(OTUD7B Antibody) at a dilution of 1/40(Cytoplasm).



In comparison with the IHC on the left, the same paraffin-embedded Human liver cancer tissue is first treated with the synthetic peptide and then with 221727(Anti-OTUD7B Antibody) at dilution 1/40.



The image on the left is immunohistochemistry of paraffin-embedded Human gastric cancer tissue using 221727(Anti-OTUD7B Antibody) at a dilution of 1/40.



In comparison with the IHC on the left, the same paraffin-embedded Human gastric cancer tissue is first treated with synthetic peptide and then with D263441(Anti-OTUD7B Antibody) at dilution 1/40.