

ORP1 RABBIT MAB

Cat.#: N262643

Product Name: Anti-ORP1 Rabbit Monoclonal Antibody

Synonyms: ORP1; OSBP8; OSBPL1; OSBPLIB

UNIPROT ID: Q9BXW6

Background: Binds phospholipids; exhibits strong binding to phosphatidic acid and weak binding to phosphatidylinositol 3-phosphate (By similarity).

Immunogen: A synthetic peptide of human ORP1

Applications: WB, ICC/IF, IP

Recommended Dilutions: WB: 1/500-1/1000 IF: 1/50-1/200 IP: 1/20

Host Species: Rabbit

Clonality: Rabbit Monoclonal

Clone ID: R02-2E2

MW: Calculated MW: 108 kDa; Observed MW: 109,50 kDa

Isotype: IgG

Purification: Affinity Purified

Species Reactivity: Human, Mouse, Rat

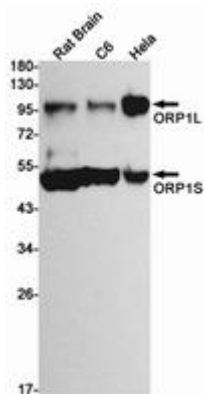
Conjugation: Unconjugated

Modification: Unmodified

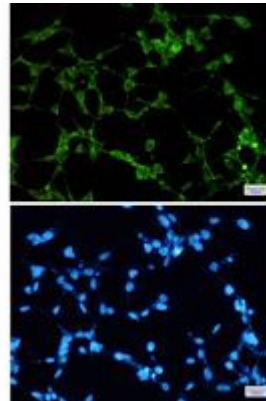
Constituents: PBS (without Mg²⁺ and Ca²⁺), pH 7.3 containing 50% glycerol, 0.5% BSA and 0.02% sodium azide

Research Areas: Signal Transduction

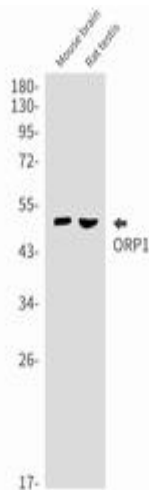
Storage & Shipping: Store at -20°C. Avoid repeated freezing and thawing



Western blot analysis of ORP1 in rat Brain, C6, HeLa lysates using ORP1 antibody



Immunocytochemistry analysis of ORP1 (green) in 293t using ORP1 antibody, and DAPI (blue).



Western blot analysis of ORP1 in mouse brain, rat testis lysates using ORP1 antibody.