

ORM1 RABBIT PAB

Cat.#: S216981

Product Name: Anti-ORM1 Rabbit Polyclonal Antibody

Synonyms: ORM; AGP1; AGP-A

UNIPROT ID: P02763 (Gene Accession - BC026238)

Background: This gene encodes a key acute phase plasma protein. Because of its increase due to acute inflammation, this protein is classified as an acute-phase reactant. The specific function of this protein has not yet been determined; however, it may be involved in aspects of immunosuppression.

Immunogen: Fusion protein of human ORM1

Applications: ELISA, WB, IHC

Recommended Dilutions: IHC: 15-50;WB: 200-1000;ELISA: 1000-2000

Host Species: Rabbit

Clonality: Rabbit Polyclonal

Isotype: Immunogen-specific rabbit IgG

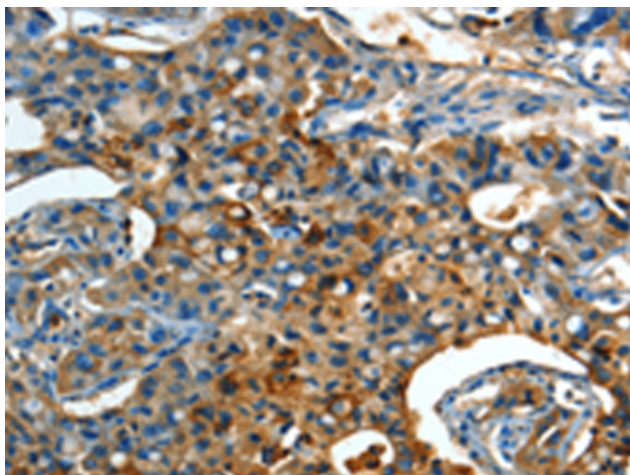
Purification: Antigen affinity purification

Species Reactivity: Human

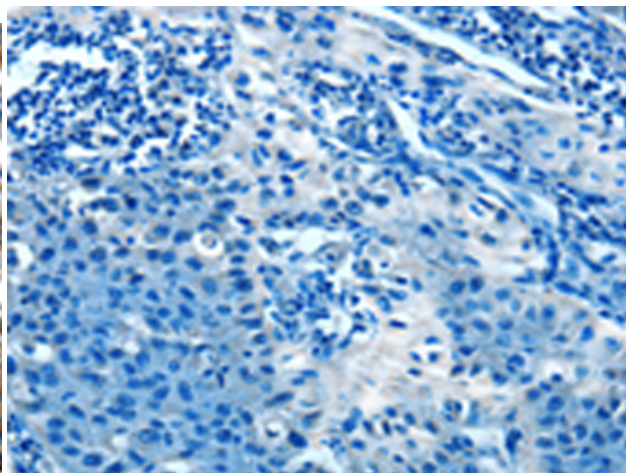
Constituents: PBS (without Mg²⁺ and Ca²⁺), pH 7.4, 150 mM NaCl, 0.05% Sodium Azide and 40% glycerol

Research Areas: Cardiovascular, Immunology

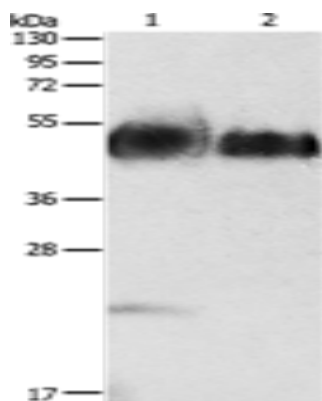
Storage & Shipping: Store at -20°C. Avoid repeated freezing and thawing



Immunohistochemistry analysis of paraffin embedded Human lung cancer tissue using 216981(ORM1 Antibody) at a dilution of 1/15(Cytoplasm).



In comparison with the IHC on the left, the same paraffin-embedded Human lung cancer tissue is first treated with the fusion protein and then with 216981(Anti-ORM1 Antibody) at dilution 1/15.



Gel: 12%SDS-PAGE, Lysate: 40 µg;
Lane 1-2: Human testis tissue, Human prostate tissue;
Primary antibody: 216981(ORM1 Antibody) at dilution 1/160;
Secondary antibody: Goat anti rabbit IgG at 1/8000 dilution;
Exposure time: 2 minutes