

ORC2 RABBIT PAB

Cat.#: S219507

Product Name: Anti-ORC2 Rabbit Polyclonal Antibody

Synonyms: ORC2L

UNIPROT ID: Q13416 (Gene Accession - BC014834)

Background: The origin recognition complex (ORC) is a highly conserved six subunits protein complex essential for the initiation of the DNA replication in eukaryotic cells. Studies in yeast demonstrated that ORC binds specifically to origins of replication and serves as a platform for the assembly of additional initiation factors such as Cdc6 and Mcm proteins. The protein encoded by this gene is a subunit of the ORC complex. This protein forms a core complex with ORC3, -4, and -5. It also interacts with CDC45 and MCM10, which are proteins known to be important for the initiation of DNA replication. This protein has been demonstrated to specifically associate with the origin of replication of Epstein-Barr virus in human cells, and is thought to be required for DNA replication from viral origin of replication. Alternatively spliced transcript variants have been found, one of which is a nonsense-mediated mRNA decay candidate.

Immunogen: Fusion protein of human ORC2

Applications: ELISA, WB, IHC

Recommended Dilutions: IHC: 50-100;WB: 500-2000;ELISA: 5000-10000

Host Species: Rabbit

Clonality: Rabbit Polyclonal

Isotype: Immunogen-specific rabbit IgG

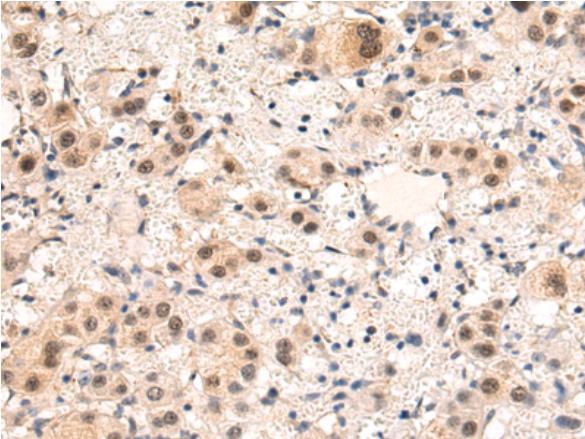
Purification: Antigen affinity purification

Species Reactivity: Human, Mouse, Rat

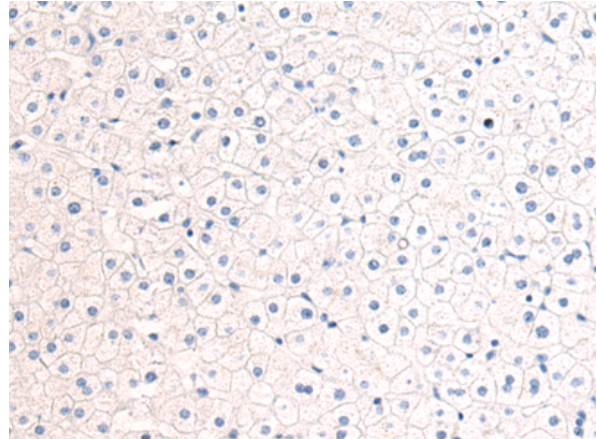
Constituents: PBS (without Mg²⁺ and Ca²⁺), pH 7.4, 150 mM NaCl, 0.05% Sodium Azide and 40% glycerol

Research Areas: Epigenetics and Nuclear Signaling

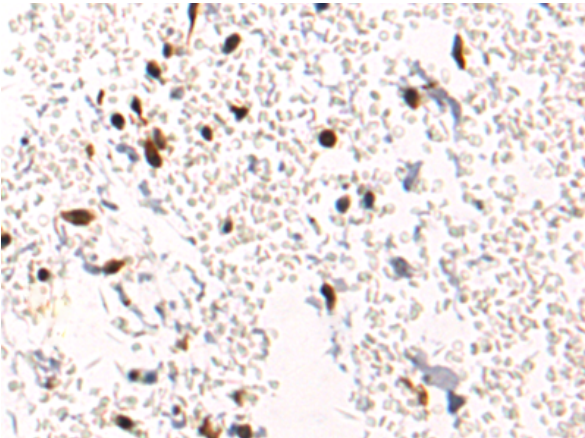
Storage & Shipping: Store at -20°C. Avoid repeated freezing and thawing



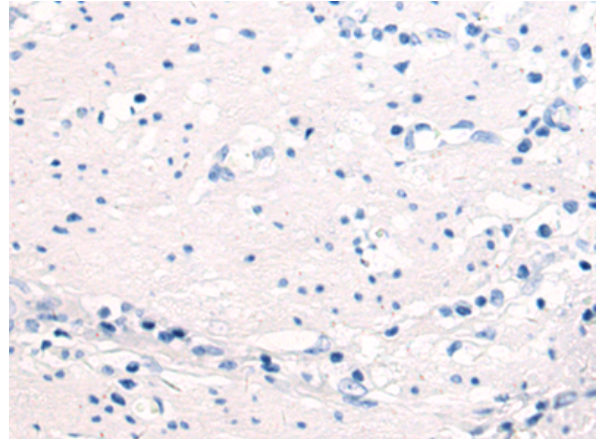
Immunohistochemistry analysis of paraffin embedded Human liver cancer tissue using 219507(ORC2 Antibody) at a dilution of 1/80(Nucleus).



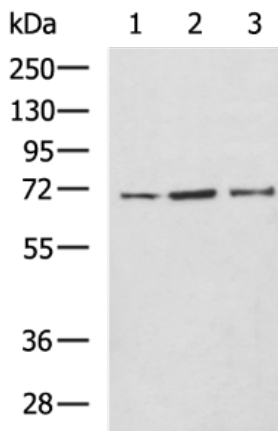
In comparison with the IHC on the left, the same paraffin-embedded Human liver cancer tissue is first treated with the fusion protein and then with 219507(Anti-ORC2 Antibody) at dilution 1/80.



The image on the left is immunohistochemistry of paraffin-embedded Human esophagus cancer tissue using 219507(Anti-ORC2 Antibody) at a dilution of 1/80.



In comparison with the IHC on the left, the same paraffin-embedded Human esophagus cancer tissue is first treated with fusion protein and then with D227406(Anti-ORC2 Antibody) at dilution 1/80.



Gel: 8%SDS-PAGE, Lysate: 40 µg;
 Lane 1-3: Raji, Jurkat, 293T cell lysates;
 Primary antibody: 219507(ORC2 Antibody) at dilution 1/600;
 Secondary antibody: HRP-conjugated Goat anti rabbit IgG at 1/5000 dilution;
 Exposure time: 2 minutes



Product Description

Pioneering GTPase and Oncogene Product Development since 2010
