

OPTINEURIN RABBIT MAB

Cat.#: N263470

Product Name: Anti-Optineurin Rabbit Monoclonal Antibody

Synonyms: NRP; FIP2; HIP7; HYPL; ALS12; GLC1E; TFIIIA-INTP

UNIPROT ID: Q96CV9

Background: Plays an important role in the maintenance of the Golgi complex, in membrane trafficking, in exocytosis, through its interaction with myosin VI and Rab8.

Immunogen: Recombinant protein of human Optineurin

Applications: WB,IHC-P

Recommended Dilutions: WB: 1/500-1/1000 IHC: 1/50-1/100

Host Species: Rabbit

Clonality: Rabbit Monoclonal

Clone ID: R01-2C5

MW: Calculated MW: 66 kDa; Observed MW: 75 kDa

Isotype: IgG

Purification: Affinity Purified

Species Reactivity: Human

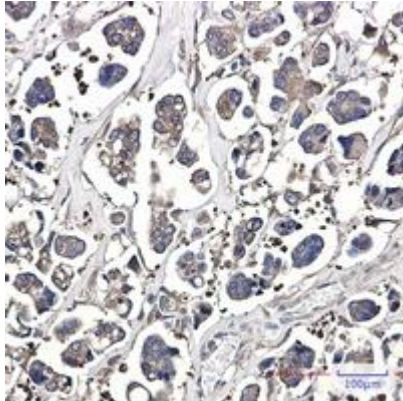
Conjugation: Unconjugated

Modification: Unmodified

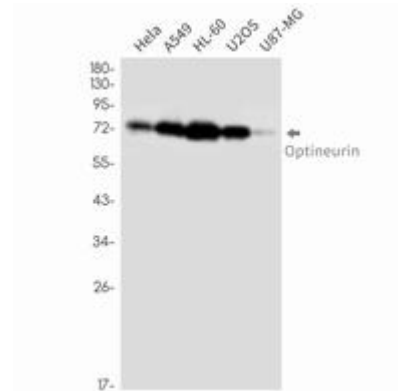
Constituents: PBS (without Mg²⁺ and Ca²⁺), pH 7.3 containing 50% glycerol, 0.5% BSA and 0.02% sodium azide

Research Areas: Immunology

Storage & Shipping: Store at -20°C. Avoid repeated freezing and thawing



Immunohistochemistry analysis of paraffin-embedded Human Cholangiocarcinoma using Optineurin antibody. High-pressure and temperature Sodium Citrate pH 6.0 was used for antigen retrieval.



Western blot analysis of Optineurin in HeLa, A549, HL-60, U2OS, U87-MG lysates using Optineurin antibody.