

OMG RABBIT PAB

Cat.#: S220770

Product Name: Anti-OMG Rabbit Polyclonal Antibody

Synonyms: OMGP

UNIPROT ID: P23515 (Gene Accession - NP_002535)

Background: Oligodendrocyte myelin glycoprotein (OMG, OMgp) is a glycosylphosphatidylinositol-anchored protein expressed by neurons and oligodendrocytes that influences the development of the adult central nervous system (CNS). OMG inhibits neurite outgrowth through its interaction with the Nogo receptor. This function requires its leucine-rich repeat domain, a highly-conserved region in OMG that influences cell proliferation, formation and maintenance of myelin sheaths. OMG inhibits neurite outgrowth from rat cerebellar granule and hippocampal cells; from dorsal root ganglion explants in which growth cone collapse was observed; from rat retinal ganglion neurons; and from NG108 and PC-12 cells.

Immunogen: Synthetic peptide of human OMG

Applications: ELISA, IHC

Recommended Dilutions: IHC: 25-100; ELISA: 1000-2000

Host Species: Rabbit

Clonality: Rabbit Polyclonal

Isotype: Immunogen-specific rabbit IgG

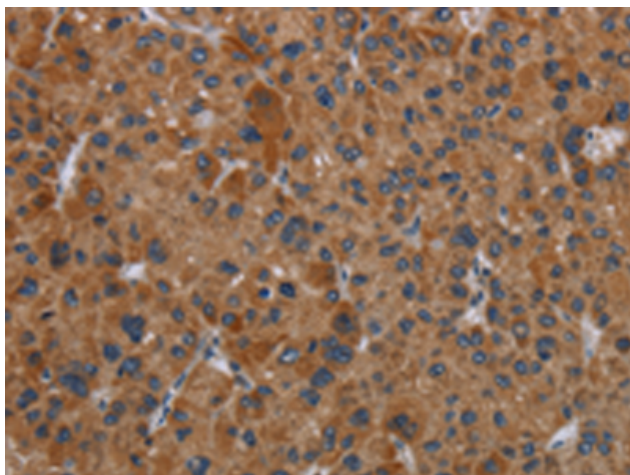
Purification: Antigen affinity purification

Species Reactivity: Human, Mouse

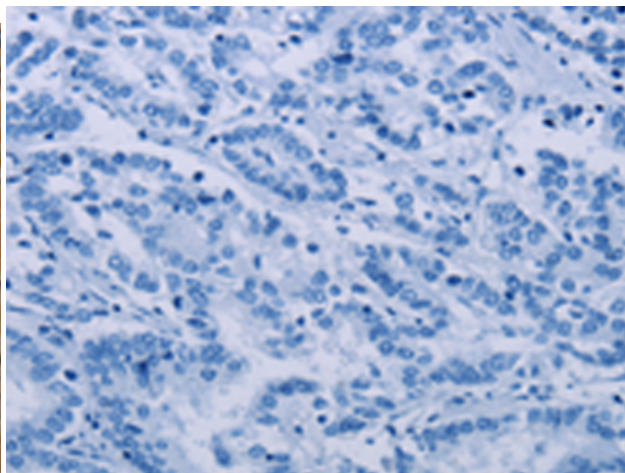
Constituents: PBS (without Mg²⁺ and Ca²⁺), pH 7.4, 150 mM NaCl, 0.05% Sodium Azide and 40% glycerol

Research Areas: Neuroscience

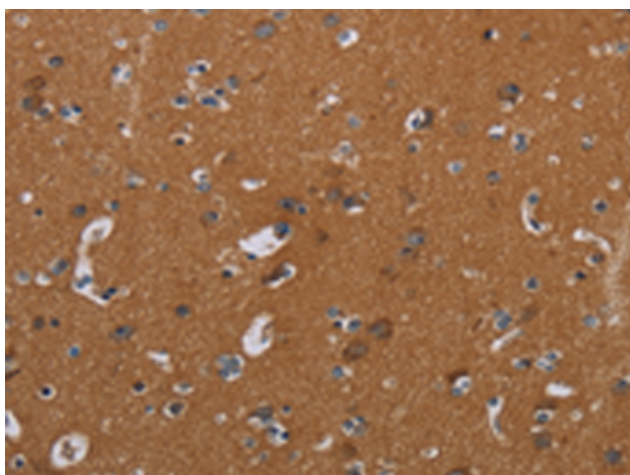
Storage & Shipping: Store at -20°C. Avoid repeated freezing and thawing



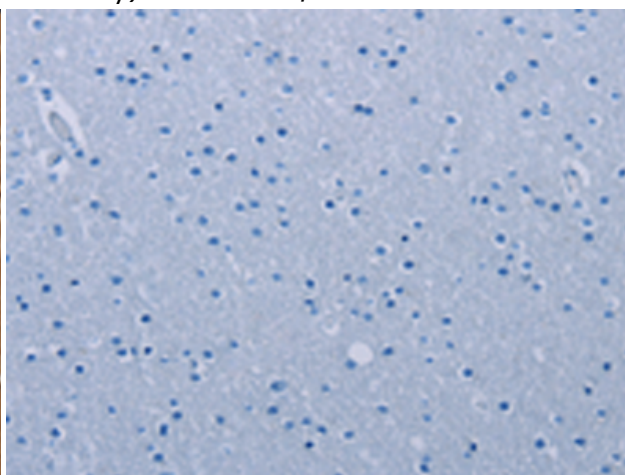
Immunohistochemistry analysis of paraffin embedded Human liver cancer tissue using 220770(OMG Antibody) at a dilution of 1/30(Nucleus or Cytoplasm).



In comparison with the IHC on the left, the same paraffin-embedded Human liver cancer tissue is first treated with the synthetic peptide and then with 220770(Anti-OMG Antibody) at dilution 1/30.



The image on the left is immunohistochemistry of paraffin-embedded Human brain tissue using 220770(Anti-OMG Antibody) at a dilution of 1/30.



In comparison with the IHC on the left, the same paraffin-embedded Human brain tissue is first treated with synthetic peptide and then with D261986(Anti-OMG Antibody) at dilution 1/30.