

## OAT1 RABBIT PAB

**Cat.#:** N225245

**Product Name:** Anti-OAT1 Rabbit pAb

**Synonyms:** SLC22A6; OAT1; PAHT; Solute carrier family 22 member 6; Organic anion transporter 1; hOAT1; PAH transporter; hPAHT; Renal organic anion transporter 1; hROAT1

**UNIPROT ID:** Q4U2R8

**Background:** Involved in the renal elimination of endogenous and exogenous organic anions.

**Immunogen:** Synthesized peptide derived from human OAT1 Polyclonal

**Applications:** WB,ELISA

**Recommended Dilutions:** WB: 1/500-1/1000 ELISA: 1/10000

**Host Species:** Rabbit

**Clonality:** Rabbit Polyclonal

**Clone ID:** -

**MW:** Calculated MW: 62 kDa; Observed MW: 55 kDa

**Isotype:** IgG

**Purification:** Affinity Purified

**Species Reactivity:** Human,Mouse,Rat

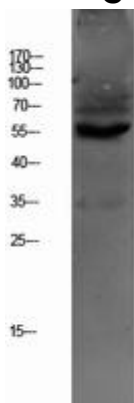
**Conjugation:** Unconjugated

**Modification:** Unmodified

**Constituents:** PBS (without Mg<sup>2+</sup> and Ca<sup>2+</sup>), pH 7.3 containing 50% glycerol, 0.5% BSA and 0.02% sodium azide

**Research Areas:** Signal Transduction

**Storage & Shipping:** Store at -20°C. Avoid repeated freezing and thawing



Western blot analysis of OAT1 in HEPG2 lysates using OAT1 antibody.



# Product Description

Pioneering GTPase and Oncogene Product Development since 2010

---