

NXF1 RABBIT MAB

Cat.#: N262639

Product Name: Anti-NXF1 Rabbit Monoclonal Antibody

Synonyms: DmNXF1; MEX67; Mex67p; Mvb1; NXF1; Sbr; TAP

UNIPROT ID: Q9UBU9

Background: Involved in the nuclear export of mRNA species bearing retroviral constitutive transport elements (CTE) and in the export of mRNA from the nucleus to the cytoplasm. The NXF1-NXT1 heterodimer is involved in the export of HSP70 mRNA in conjunction with THOC4 and THOC5.

Immunogen: A synthetic peptide of human NXF1

Applications: WB,IHC-F,IHC-P,ICC/IF,IP

Recommended Dilutions: WB: 1/500-1/1000 IHC: 1/50-1/100 IF: 1/50-1/200 IP: 1/20

Host Species: Rabbit

Clonality: Rabbit Monoclonal

Clone ID: R05-1C3

MW: Calculated MW: 70 kDa; Observed MW: 70 kDa

Isotype: IgG

Purification: Affinity Purified

Species Reactivity: Human

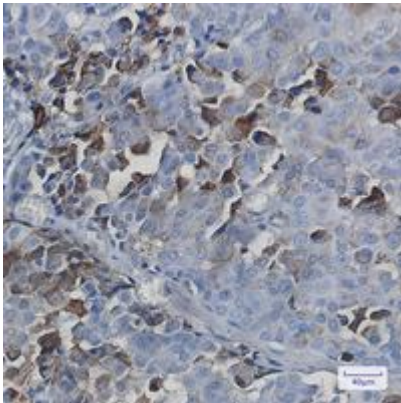
Conjugation: Unconjugated

Modification: Unmodified

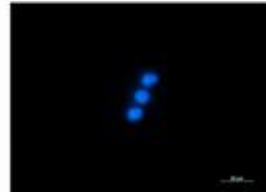
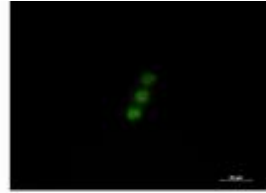
Constituents: PBS (without Mg²⁺ and Ca²⁺), pH 7.3 containing 50% glycerol, 0.5% BSA and 0.02% sodium azide

Research Areas: Tags & Cell Markers

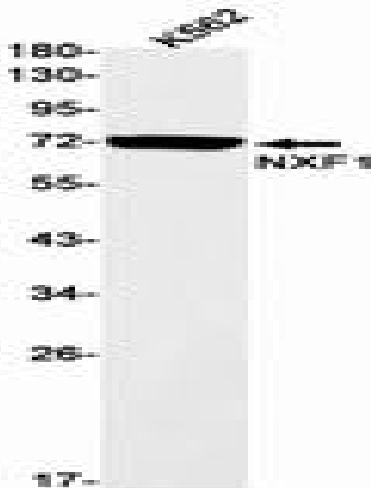
Storage & Shipping: Store at -20°C. Avoid repeated freezing and thawing



Immunohistochemistry analysis of paraffin-embedded Human breast cancer tissue using NXF1 antibody. High-pressure and temperature Sodium Citrate pH 6.0 was used for antigen retrieval.



Immunocytochemistry analysis of NXF1 (green) in Jurkat using NXF1 antibody, and DAPI (blue).



Western blot analysis of NXF1 in K562 lysates using NXF1 antibody.