

## NUP155 RABBIT MAB

**Cat.#:** N263464

**Product Name:** Anti-NUP155 Rabbit Monoclonal Antibody

**Synonyms:** N155; ATFB15

**UNIPROT ID:** O75694

**Background:** Essential component of nuclear pore complex.

**Immunogen:** Recombinant protein of human NUP155

**Applications:** WB, ICC/IF

**Recommended Dilutions:** WB: 1/500-1/1000 IF: 1/50-1/200

**Host Species:** Rabbit

**Clonality:** Rabbit Monoclonal

**Clone ID:** R03-6F7

**MW:** Calculated MW: 155 kDa; Observed MW: 155 kDa

**Isotype:** IgG

**Purification:** Affinity Purified

**Species Reactivity:** Human

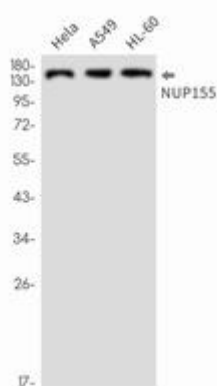
**Conjugation:** Unconjugated

**Modification:** Unmodified

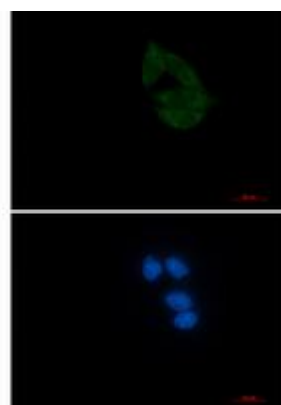
**Constituents:** PBS (without Mg<sup>2+</sup> and Ca<sup>2+</sup>), pH 7.3 containing 50% glycerol, 0.5% BSA and 0.02% sodium azide

**Research Areas:** Tags & Cell Markers

**Storage & Shipping:** Store at -20°C. Avoid repeated freezing and thawing



Western blot analysis of NUP155 in HeLa, A549, HL-60 lysates using NUP155 antibody.



Immunocytochemistry analysis of NUP155 (green) in HeLa using NUP155 antibody, and DAPI (blue).



# Product Description

Pioneering GTPase and Oncogene Product Development since 2010

---