

NUDT6 RABBIT PAB

Cat.#: S218133

Product Name: Anti-NUDT6 Rabbit Polyclonal Antibody

Synonyms: GFG1; GFG-1; ASFGF2; FGF-AS; FGF2AS

UNIPROT ID: P53370 (Gene Accession - BC009842)

Background: This gene overlaps and lies on the opposite strand from FGF2 gene, and is thought to be the FGF2 antisense gene. The two genes are independently transcribed, and their expression shows an inverse relationship, suggesting that this antisense transcript may regulate FGF2 expression. This gene has also been shown to have hormone-regulatory and antiproliferative actions in the pituitary that are independent of FGF2 expression. Alternatively spliced transcript variants encoding different isoforms have been found for this gene.

Immunogen: Fusion protein of human NUDT6

Applications: ELISA, WB, IHC

Recommended Dilutions: IHC: 150-300;WB: 500-2000;ELISA: 5000-10000

Host Species: Rabbit

Clonality: Rabbit Polyclonal

Isotype: Immunogen-specific rabbit IgG

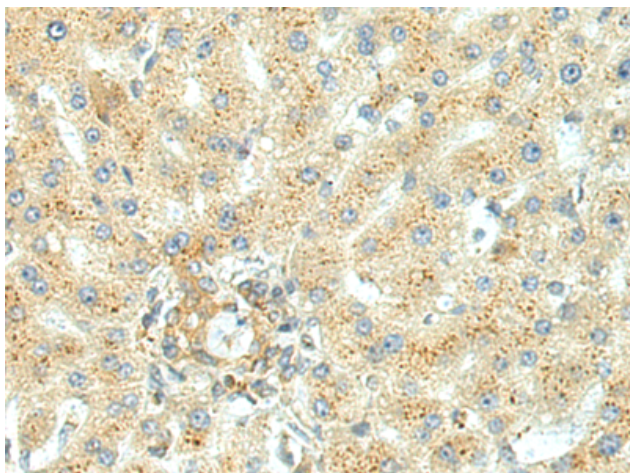
Purification: Antigen affinity purification

Species Reactivity: Human, Mouse, Rat

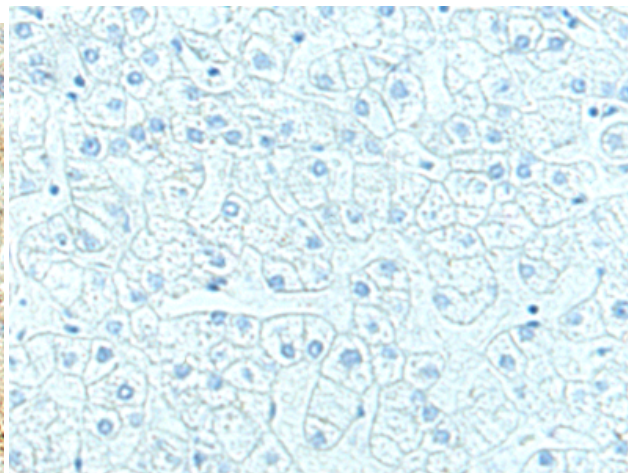
Constituents: PBS (without Mg²⁺ and Ca²⁺), pH 7.4, 150 mM NaCl, 0.05% Sodium Azide and 40% glycerol

Research Areas: Cell Biology

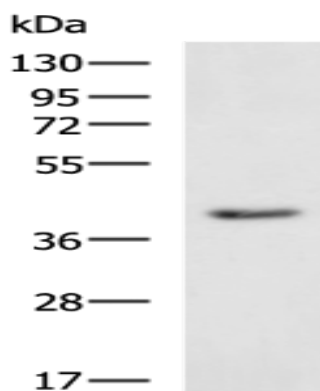
Storage & Shipping: Store at -20°C. Avoid repeated freezing and thawing



Immunohistochemistry analysis of paraffin embedded Human liver cancer tissue using 218133(NUDT6 Antibody) at a dilution of 1/170(Cytoplasm).



In comparison with the IHC on the left, the same paraffin-embedded Human liver cancer tissue is first treated with the fusion protein and then with 218133(Anti-NUDT6 Antibody) at dilution 1/170.



Gel: 8%SDS-PAGE, Lysate: 40 μ g;
Lane: Rat heart tissue lysate;
Primary antibody: 218133(NUDT6 Antibody) at dilution 1/700;
Secondary antibody: HRP-conjugated Goat anti rabbit IgG at 1/5000 dilution;
Exposure time: 10 seconds