

## NUDT21 RABBIT PAB

**Cat.#:** S218132

**Product Name:** Anti-NUDT21 Rabbit Polyclonal Antibody

**Synonyms:** CPSF5; CFIM25

**UNIPROT ID:** O43809 (Gene Accession - BC001403 )

**Background:** The protein encoded by this gene is one subunit of a cleavage factor required for 3' RNA cleavage and polyadenylation processing. The interaction of the protein with the RNA is one of the earliest steps in the assembly of the 3' end processing complex and facilitates the recruitment of other processing factors. This gene encodes the 25kD subunit of the protein complex, which is composed of four polypeptides.

**Immunogen:** Fusion protein of human NUDT21

**Applications:** ELISA, WB, IHC

**Recommended Dilutions:** IHC: 150-300;WB: 500-2000;ELISA: 5000-10000

**Host Species:** Rabbit

**Clonality:** Rabbit Polyclonal

**Isotype:** Immunogen-specific rabbit IgG

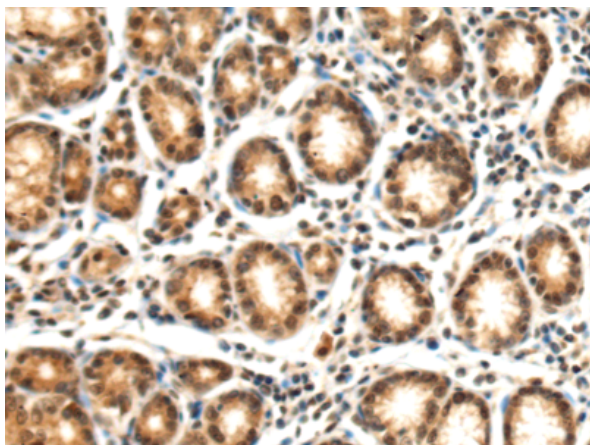
**Purification:** Antigen affinity purification

**Species Reactivity:** Human, Mouse, Rat

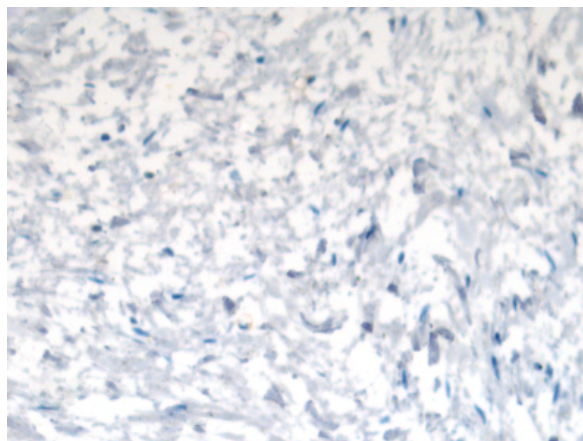
**Constituents:** PBS (without Mg<sup>2+</sup> and Ca<sup>2+</sup>), pH 7.4, 150 mM NaCl, 0.05% Sodium Azide and 40% glycerol

**Research Areas:** Epigenetics and Nuclear Signaling

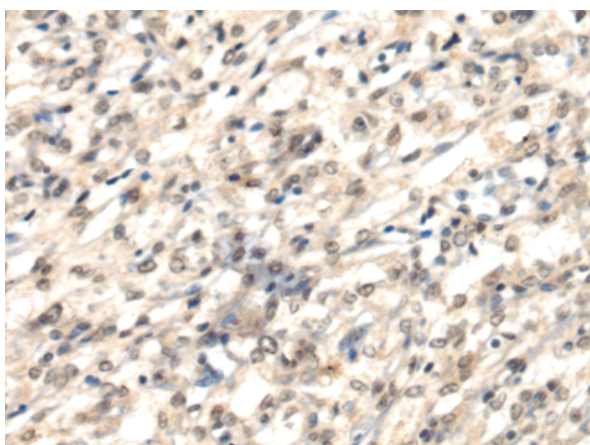
**Storage & Shipping:** Store at -20°C. Avoid repeated freezing and thawing



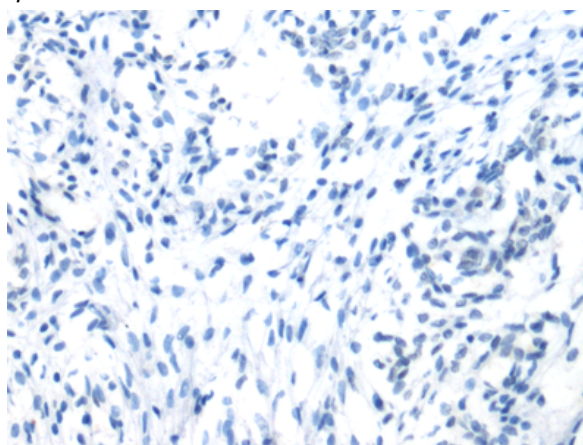
Immunohistochemistry analysis of paraffin embedded Human gastric cancer tissue using 218132(NUDT21 Antibody) at a dilution of 1/150(Cytoplasm and Nucleus).



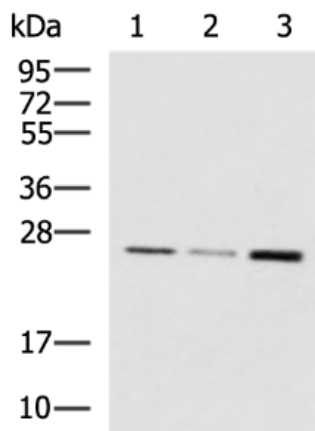
In comparison with the IHC on the left, the same paraffin-embedded Human gastric cancer tissue is first treated with the fusion protein and then with 218132(Anti-NUDT21 Antibody) at dilution 1/150.



The image on the left is immunohistochemistry of paraffin-embedded Human brain tissue using 218132(Anti-NUDT21 Antibody) at a dilution of 1/150.



In comparison with the IHC on the left, the same paraffin-embedded Human brain tissue is first treated with fusion protein and then with D223787(Anti-NUDT21 Antibody) at dilution 1/150.



Gel: 12%SDS-PAGE, Lysate: 40 µg;  
Lane 1-3: HeLa, 293T, SKOV3 cell lysates;  
Primary antibody: 218132(NUDT21 Antibody) at dilution 1/1150;  
Secondary antibody: HRP-conjugated Goat anti rabbit IgG at 1/5000 dilution;  
Exposure time: 1 minute



# Product Description

Pioneering GTPase and Oncogene Product Development since 2010

---