

NRAS RABBIT PAB

Cat.#: S222351

Product Name: Anti-NRAS Rabbit Polyclonal Antibody

Synonyms: NS6; CMNS; NCMS; ALPS4; N-ras; NRAS1

UNIPROT ID: P01111 (Gene Accession - NP_002515.)

Background: This is an N-ras oncogene encoding a membrane protein that shuttles between the Golgi apparatus and the plasma membrane. This shuttling is regulated through palmitoylation and depalmitoylation by the ZDHHC9-GOLGA7 complex. The encoded protein, which has intrinsic GTPase activity, is activated by a guanine nucleotide-exchange factor and inactivated by a GTPase activating protein. Mutations in this gene have been associated with somatic rectal cancer, follicular thyroid cancer, autoimmune lymphoproliferative syndrome, Noonan syndrome, and juvenile myelomonocytic leukemia.

Immunogen: Synthetic peptide of human NRAS

Applications: ELISA, WB, IHC

Recommended Dilutions: IHC: 50-100;WB: 200-1000;ELISA: 5000-10000

Host Species: Rabbit

Clonality: Rabbit Polyclonal

Isotype: Immunogen-specific rabbit IgG

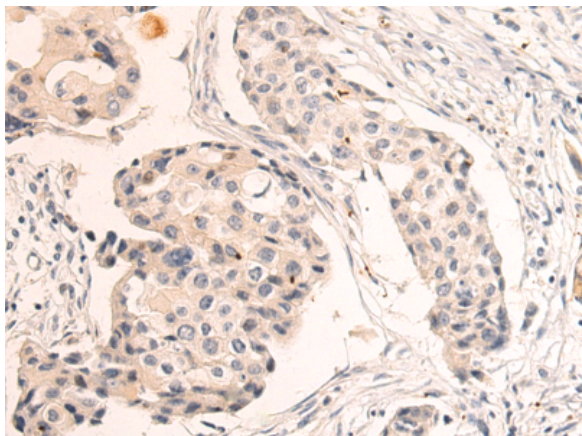
Purification: Antigen affinity purification

Species Reactivity: Human, Mouse, Rat

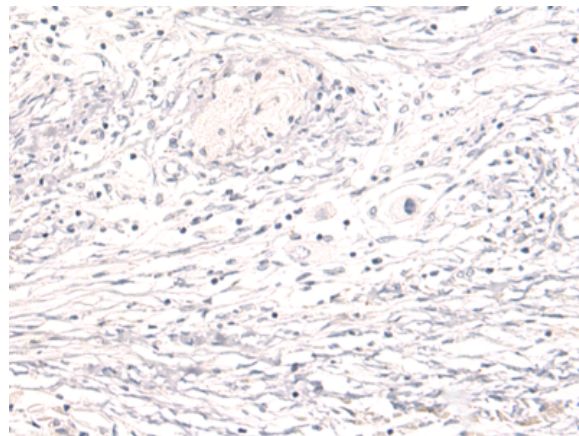
Constituents: PBS (without Mg²⁺ and Ca²⁺), pH 7.4, 150 mM NaCl, 0.05% Sodium Azide and 40% glycerol

Research Areas: Signal Transduction, Cancer

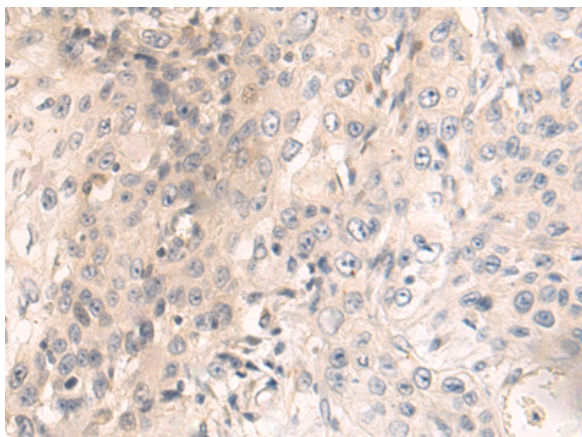
Storage & Shipping: Store at -20°C. Avoid repeated freezing and thawing



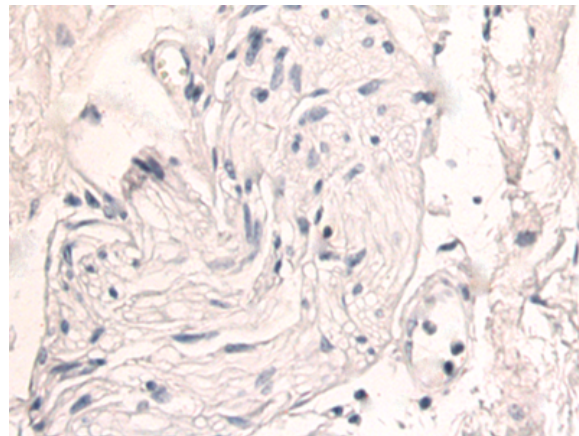
Immunohistochemistry analysis of paraffin embedded Human breast cancer tissue using 222351(NRAS Antibody) at a dilution of 1/50(Cytoplasm and Cell membrane).



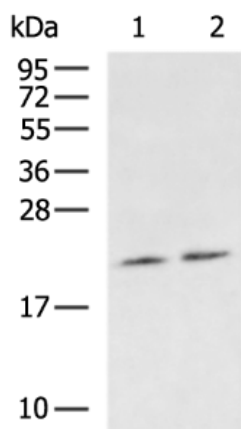
In comparison with the IHC on the left, the same paraffin-embedded Human breast cancer tissue is first treated with the synthetic peptide and then with 222351(Anti-NRAS Antibody) at dilution 1/50.



The image on the left is immunohistochemistry of paraffin-embedded Human esophagus cancer tissue using 222351(Anti-NRAS Antibody) at a dilution of 1/50.



In comparison with the IHC on the left, the same paraffin-embedded Human esophagus cancer tissue is first treated with synthetic peptide and then with D264460(Anti-NRAS Antibody) at dilution 1/50.



Gel: 10%SDS-PAGE, Lysate: 40 µg;
 Lane 1-2: Human cerebella tissue, Mouse brain tissue lysates;
 Primary antibody: 222351(NRAS Antibody) at dilution 1/250;
 Secondary antibody: HRP-conjugated Goat anti rabbit IgG at 1/5000 dilution;
 Exposure time: 1 minute



Product Description

Pioneering GTPase and Oncogene Product Development since 2010
