

NR2E1 RABBIT PAB

Cat.#: S219369

Product Name: Anti-NR2E1 Rabbit Polyclonal Antibody

Synonyms: TLL; TLX; XTLL

UNIPROT ID: Q9Y466 (Gene Accession - BC028031)

Background: The protein encoded by this gene is an orphan receptor involved in retinal development. The encoded protein also regulates adult neural stem cell proliferation and may be involved in control of aggressive behavior. Two transcript variants encoding different isoforms have been found for this gene. [provided by RefSeq, Aug 2015]

Immunogen: Fusion protein of human NR2E1

Applications: ELISA, WB, IHC

Recommended Dilutions: IHC: 100-300;WB: 1000-5000;ELISA: 5000-10000

Host Species: Rabbit

Clonality: Rabbit Polyclonal

Isotype: Immunogen-specific rabbit IgG

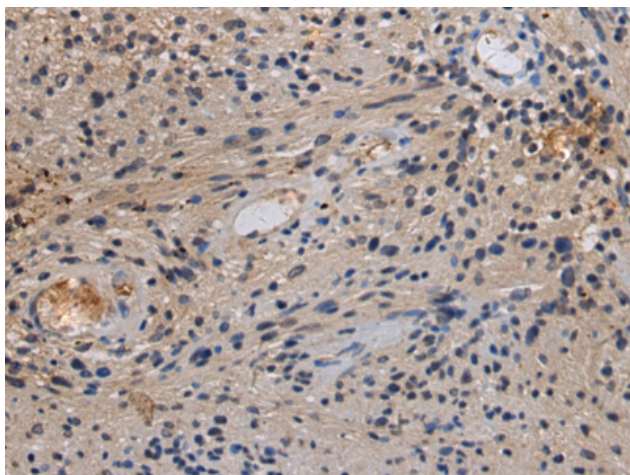
Purification: Antigen affinity purification

Species Reactivity: Human, Mouse

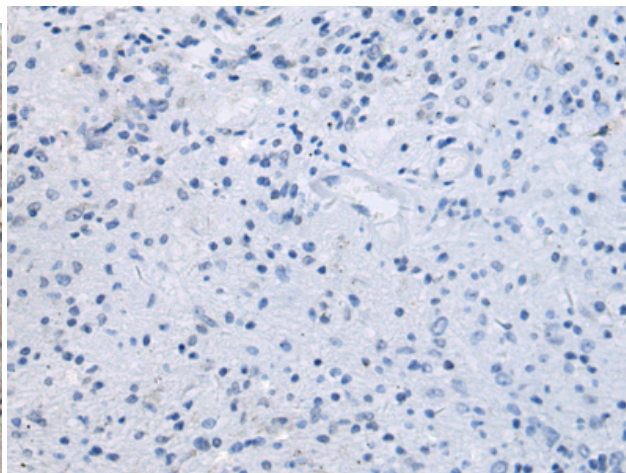
Constituents: PBS (without Mg²⁺ and Ca²⁺), pH 7.4, 150 mM NaCl, 0.05% Sodium Azide and 40% glycerol

Research Areas: Signal Transduction, Epigenetics and Nuclear Signaling, Neuroscience, Stem Cells

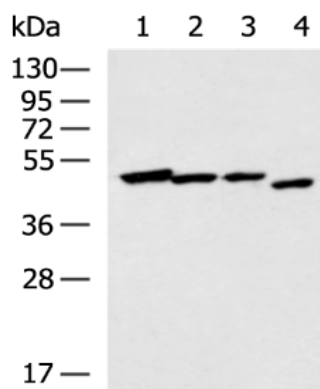
Storage & Shipping: Store at -20°C. Avoid repeated freezing and thawing



Immunohistochemistry analysis of paraffin embedded Human brain tissue using 219369(NR2E1 Antibody) at a dilution of 1/160(Cytoplasm).



In comparison with the IHC on the left, the same paraffin-embedded Human brain tissue is first treated with the fusion protein and then with 219369(Anti-NR2E1 Antibody) at dilution 1/160.



Gel: 8%SDS-PAGE, Lysate: 40 µg;
 Lane 1-4: Human cerebrum tissue, A172 cell,
 Mouse brain tissue, NIH/3T3 cell lysates;
 Primary antibody: 219369(NR2E1 Antibody) at
 dilution 1/1000;
 Secondary antibody: HRP-conjugated Goat
 anti rabbit IgG at 1/5000 dilution;
 Exposure time: 1 minute