

NR1D1 RABBIT MAB

Cat.#: N262622

Product Name: Anti-NR1D1 Rabbit Monoclonal Antibody

Synonyms: NR1D1; EAR1; HREV; THRAL; Nuclear receptor subfamily 1 group D member 1; Rev-erbA-alpha; V-erbA-related protein 1; EAR-1

UNIPROT ID: P20393

Background: Functions as a constitutive transcriptional repressor. Possible receptor for triiodothyronine.

Immunogen: A synthetic peptide of human NR1D1

Applications: WB,ICC/IF

Recommended Dilutions: WB: 1/500-1/1000 IF: 1/50-1/200

Host Species: Rabbit

Clonality: Rabbit Monoclonal

Clone ID: R05-8B1

MW: Calculated MW: 67 kDa; Observed MW: 67 kDa

Isotype: IgG

Purification: Affinity Purified

Species Reactivity: Human,Mouse,Rat

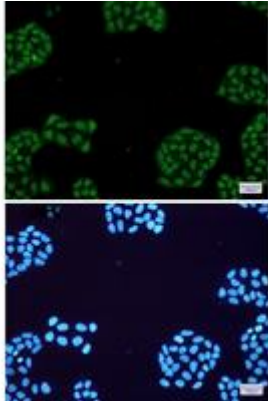
Conjugation: Unconjugated

Modification: Unmodified

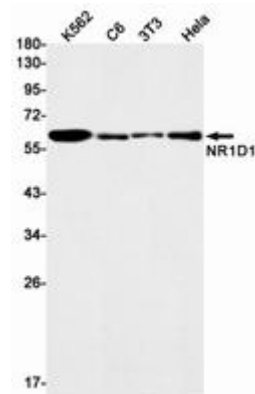
Constituents: PBS (without Mg²⁺ and Ca²⁺), pH 7.3 containing 50% glycerol, 0.5% BSA and 0.02% sodium azide

Research Areas: Signal Transduction

Storage & Shipping: Store at -20°C. Avoid repeated freezing and thawing



Immunocytochemistry analysis of NR1D1 (green) in HeLa using NR1D1 antibody, and DAPI (blue)



Western blot analysis of NR1D1 in K562, C6, 3T3, HeLa lysates using NR1D1 antibody.