

## NQO1 RABBIT PAB

**Cat.#:** S220152

**Product Name:** Anti-NQO1 Rabbit Polyclonal Antibody

**Synonyms:** DTD; QR1; DHQU; DIA4; NMOR1; NMORI

**UNIPROT ID:** P15559 (Gene Accession - NP\_000894 )

**Background:** This gene is a member of the NAD(P)H dehydrogenase (quinone) family and encodes a cytoplasmic 2-electron reductase. This FAD-binding protein forms homodimers and reduces quinones to hydroquinones. This protein's enzymatic activity prevents the one electron reduction of quinones that results in the production of radical species. Mutations in this gene have been associated with tardive dyskinesia (TD), an increased risk of hematotoxicity after exposure to benzene, and susceptibility to various forms of cancer. Altered expression of this protein has been seen in many tumors and is also associated with Alzheimer's disease (AD). Alternate transcriptional splice variants, encoding different isoforms, have been characterized.

**Immunogen:** Synthetic peptide of human NQO1

**Applications:** ELISA, WB, IHC

**Recommended Dilutions:** IHC: 25-100;WB: 1000-5000;ELISA: 1000-5000

**Host Species:** Rabbit

**Clonality:** Rabbit Polyclonal

**Isotype:** Immunogen-specific rabbit IgG

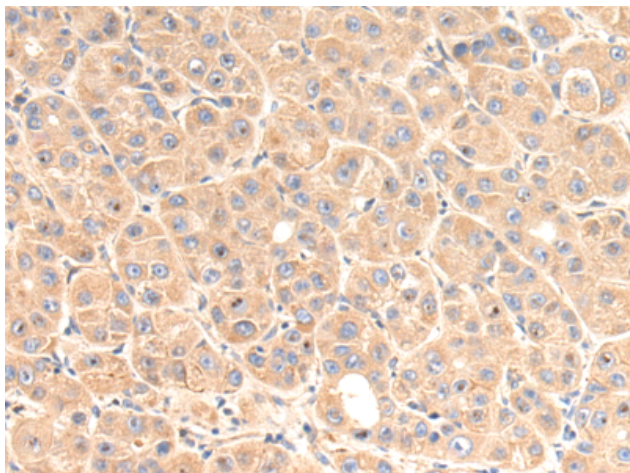
**Purification:** Antigen affinity purification

**Species Reactivity:** Human, Mouse, Rat

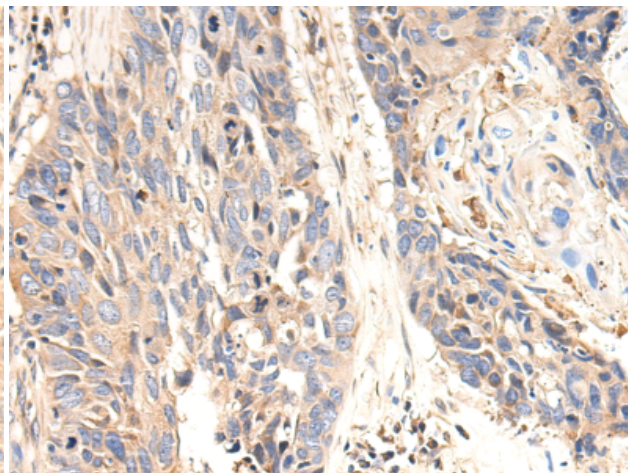
**Constituents:** PBS (without Mg<sup>2+</sup> and Ca<sup>2+</sup>), pH 7.4, 150 mM NaCl, 0.05% Sodium Azide and 40% glycerol

**Research Areas:** Metabolism

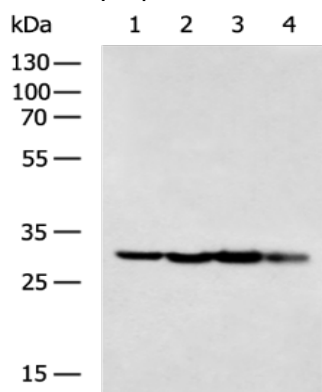
**Storage & Shipping:** Store at -20°C. Avoid repeated freezing and thawing



Immunohistochemistry analysis of paraffin-embedded Human liver cancer tissue using 220152(NQO1 Antibody) at a dilution of 1/25(Cytoplasm).



Immunohistochemistry analysis of paraffin-embedded Human lung cancer tissue using 220152(Anti-NQO1 Antibody) at a dilution of 1/25.



Gel: 8%SDS-PAGE, Lysate: 40  $\mu$ g;  
Lane 1-4: HeLa, MCF7, A549, HepG2 cell lysates;  
Primary antibody: 220152(NQO1 Antibody) at dilution 1/600;  
Secondary antibody: HRP-conjugated Goat anti rabbit IgG at 1/5000 dilution;  
Exposure time: 1 second