

NPPC RABBIT PAB

Cat.#: S220150

Product Name: Anti-NPPC Rabbit Polyclonal Antibody

Synonyms: CNP; CNP2

UNIPROT ID: P23582 (Gene Accession - NP_077720)

Background: This gene encodes a preproprotein that is proteolytically processed to generate multiple protein products. These products include the cardiac natriuretic peptides CNP-53, CNP-29 and CNP-22, which belong to the natriuretic family of peptides. The encoded peptides exhibit vasorelaxation activity in laboratory animals and elevated levels of CNP-22 have been observed in the plasma of chronic heart failure patients.

Immunogen: Synthetic peptide of human NPPC

Applications: ELISA, IHC

Recommended Dilutions: IHC: 50-200; ELISA: 2000-10000

Host Species: Rabbit

Clonality: Rabbit Polyclonal

Isotype: Immunogen-specific rabbit IgG

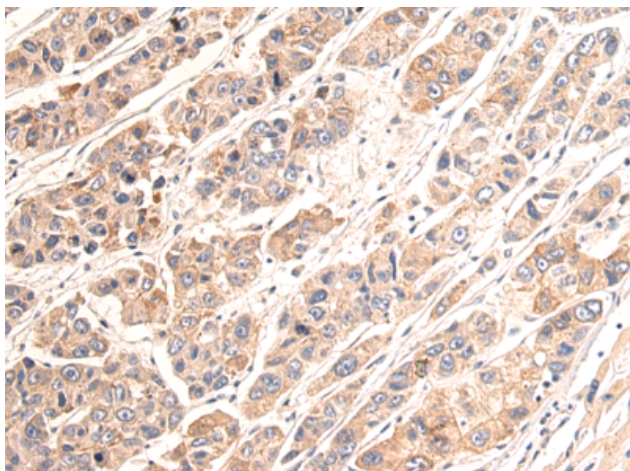
Purification: Antigen affinity purification

Species Reactivity: Human, Mouse, Rat

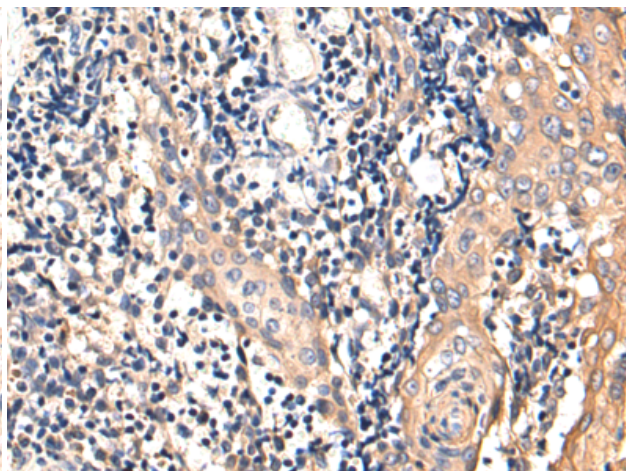
Constituents: PBS (without Mg²⁺ and Ca²⁺), pH 7.4, 150 mM NaCl, 0.05% Sodium Azide and 40% glycerol

Research Areas: Signal Transduction, Cancer, Cardiovascular, Metabolism

Storage & Shipping: Store at -20°C. Avoid repeated freezing and thawing



Immunohistochemistry analysis of paraffin-embedded Human liver cancer tissue using 220150(NPPC Antibody) at a dilution of 1/70(Cytoplasm).



Immunohistochemistry analysis of paraffin-embedded Human tonsil tissue using 220150(Anti-NPPC Antibody) at a dilution of 1/70.