

## NPC2 RABBIT PAB

**Cat.#:** S218970

**Product Name:** Anti-NPC2 Rabbit Polyclonal Antibody

**Synonyms:** HE1; EDDM1

**UNIPROT ID:** P61916 (Gene Accession - BC002532 )

**Background:** This gene encodes a protein containing a lipid recognition domain. The encoded protein may function in regulating the transport of cholesterol through the late endosomal/lysosomal system. Mutations in this gene have been associated with Niemann-Pick disease, type C2 and frontal lobe atrophy.

**Immunogen:** Fusion protein of human NPC2

**Applications:** ELISA, WB, IHC

**Recommended Dilutions:** IHC: 50-200;WB: 1000-5000;ELISA: 5000-10000

**Host Species:** Rabbit

**Clonality:** Rabbit Polyclonal

**Isotype:** Immunogen-specific rabbit IgG

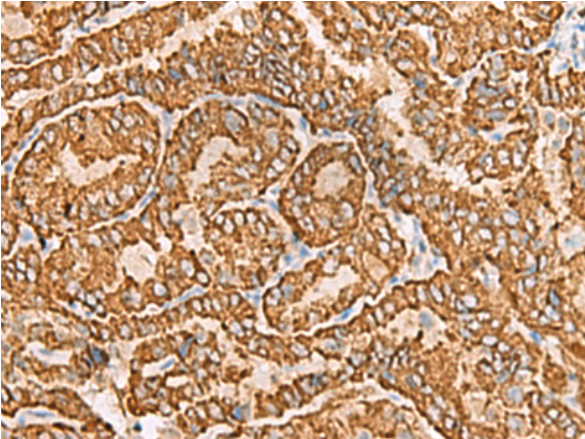
**Purification:** Antigen affinity purification

**Species Reactivity:** Human, Mouse

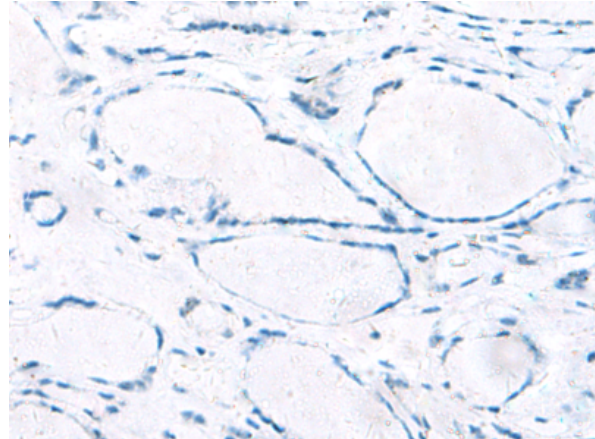
**Constituents:** PBS (without Mg<sup>2+</sup> and Ca<sup>2+</sup>), pH 7.4, 150 mM NaCl, 0.05% Sodium Azide and 40% glycerol

**Research Areas:** Metabolism, Neuroscience, Cardiovascular

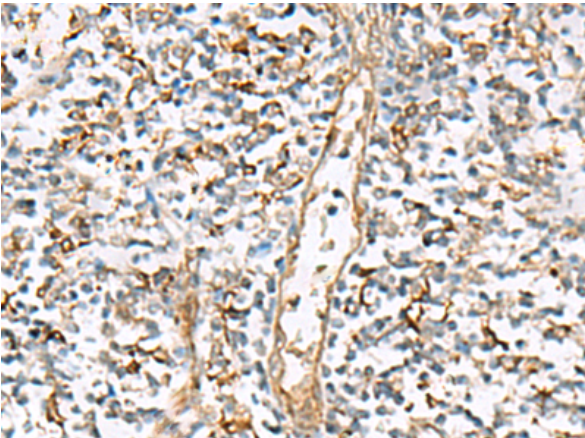
**Storage & Shipping:** Store at -20°C. Avoid repeated freezing and thawing



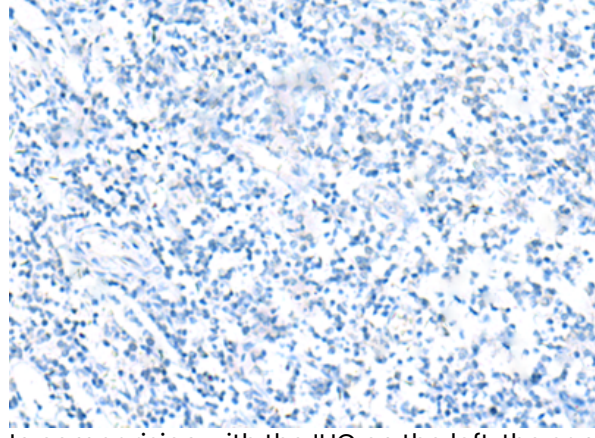
Immunohistochemistry analysis of paraffin embedded Human thyroid cancer tissue using 218970(NPC2 Antibody) at a dilution of 1/80(Cytoplasm).



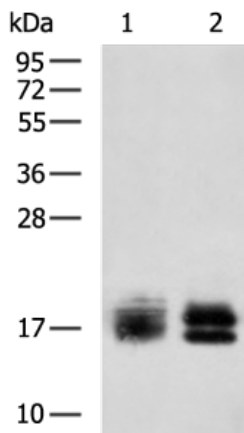
In comparison with the IHC on the left, the same paraffin-embedded Human thyroid cancer tissue is first treated with the fusion protein and then with 218970(Anti-NPC2 Antibody) at dilution 1/80.



The image on the left is immunohistochemistry of paraffin-embedded Human tonsil tissue using 218970(Anti-NPC2 Antibody) at a dilution of 1/80.



In comparison with the IHC on the left, the same paraffin-embedded Human tonsil tissue is first treated with fusion protein and then with D225585(Anti-NPC2 Antibody) at dilution 1/80.



Gel: 12%SDS-PAGE, Lysate: 40 µg;  
 Lane 1-2: Human spleen tissue, Mouse kidney tissue lysates;  
 Primary antibody: 218970(NPC2 Antibody) at dilution 1/1150;  
 Secondary antibody: HRP-conjugated Goat anti rabbit IgG at 1/5000 dilution;  
 Exposure time: 3 minutes



# Product Description

Pioneering GTPase and Oncogene Product Development since 2010

---