

## NOX1 RABBIT PAB

**Cat.#:** S220756

**Product Name:** Anti-NOX1 Rabbit Polyclonal Antibody

**Synonyms:** MOX1; NOH1; NOH-1; GP91-2; NOH-1L

**UNIPROT ID:** Q9Y5S8 (Gene Accession - NP\_008983 )

**Background:** This gene encodes a member of the NADPH oxidase family of enzymes responsible for the catalytic one-electron transfer of oxygen to generate superoxide or hydrogen peroxide. Alternatively spliced transcript variants encoding multiple isoforms have been observed for this gene.

**Immunogen:** Synthetic peptide of human NOX1

**Applications:** ELISA, IHC

**Recommended Dilutions:** IHC: 50-100; ELISA: 5000-10000

**Host Species:** Rabbit

**Clonality:** Rabbit Polyclonal

**Isotype:** Immunogen-specific rabbit IgG

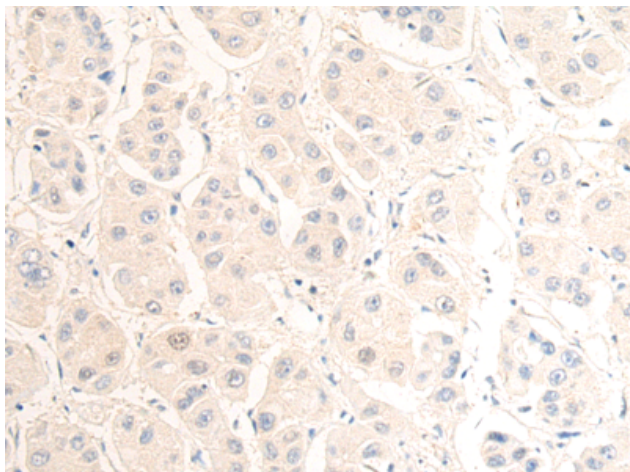
**Purification:** Antigen affinity purification

**Species Reactivity:** Human, Mouse, Rat

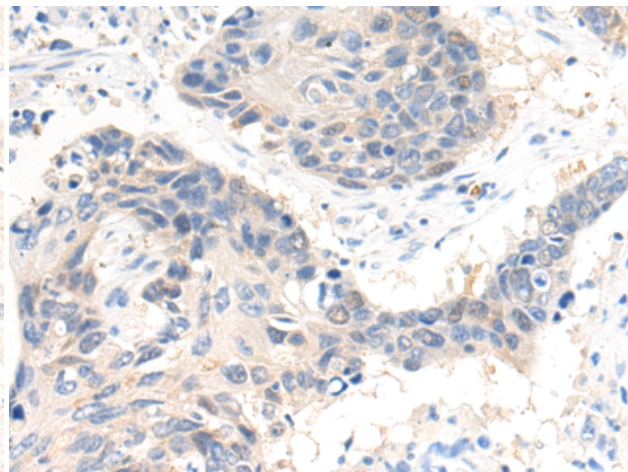
**Constituents:** PBS (without Mg<sup>2+</sup> and Ca<sup>2+</sup>), pH 7.4, 150 mM NaCl, 0.05% Sodium Azide and 40% glycerol

**Research Areas:** Metabolism, Epigenetics and Nuclear Signaling, Cell Biology, Immunology

**Storage & Shipping:** Store at -20°C. Avoid repeated freezing and thawing



Immunohistochemistry analysis of paraffin-embedded Human liver cancer tissue using 220756(Nox1 Antibody) at a dilution of 1/50(Cytoplasm).



Immunohistochemistry analysis of paraffin-embedded Human lung cancer tissue using 220756(Anti-NOX1 Antibody) at a dilution of 1/50.