

## NME4 RABBIT PAB

**Cat.#:** S216683

**Product Name:** Anti-NME4 Rabbit Polyclonal Antibody

**Synonyms:** NDPK-D; NM23H4; nm23-H4

**UNIPROT ID:** O00746 (Gene Accession - BC017067 )

**Background:** The nucleoside diphosphate (NDP) kinases (EC 2.7.4.6) are ubiquitous enzymes that catalyze transfer of gamma-phosphates, via a phosphohistidine intermediate, between nucleoside and dioxynucleoside tri- and diphosphates. The enzymes are products of the nm23 gene family, which includes NME4 (Milon et al., 1997 [PubMed 9099850]).

**Immunogen:** Fusion protein of human NME4

**Applications:** ELISA, IHC

**Recommended Dilutions:** IHC: 30-150; ELISA: 1000-2000

**Host Species:** Rabbit

**Clonality:** Rabbit Polyclonal

**Isotype:** Immunogen-specific rabbit IgG

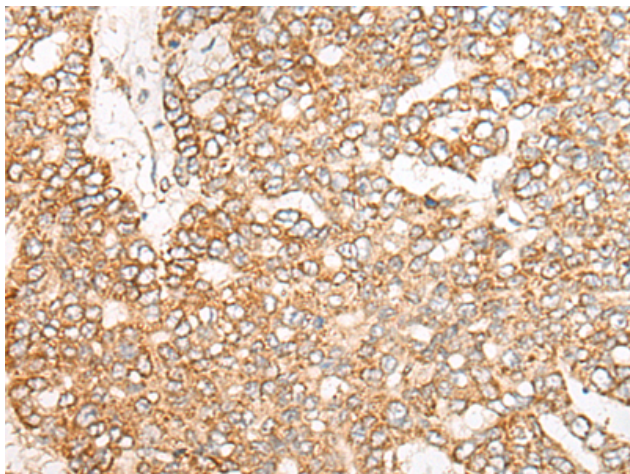
**Purification:** Antigen affinity purification

**Species Reactivity:** Human, Mouse

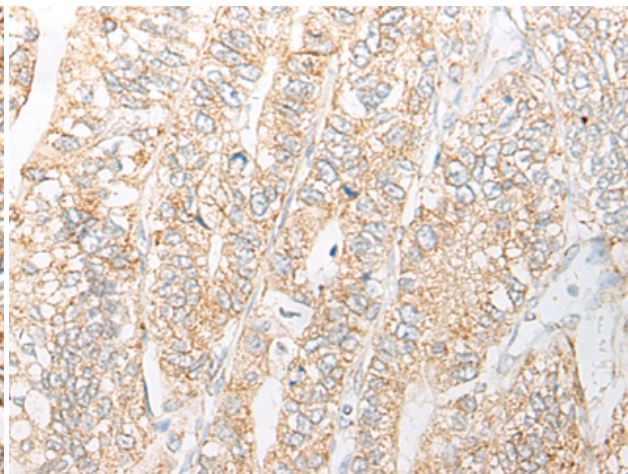
**Constituents:** PBS (without Mg<sup>2+</sup> and Ca<sup>2+</sup>), pH 7.4, 150 mM NaCl, 0.05% Sodium Azide and 40% glycerol

**Research Areas:** Metabolism, Signal Transduction, Neuroscience

**Storage & Shipping:** Store at -20°C. Avoid repeated freezing and thawing



Immunohistochemistry analysis of paraffin-embedded Human liver cancer tissue using 216683(NME4 Antibody) at a dilution of 1/45(Cytoplasm).



Immunohistochemistry analysis of paraffin-embedded Human gastric cancer tissue using 216683(Anti-NME4 Antibody) at a dilution of 1/45.