

## NME3 RABBIT MAB

**Cat.#:** N263456

**Product Name:** Anti-NME3 Rabbit Monoclonal Antibody

**Synonyms:** NDPKC; NDPK-C; NM23H3; DR-nm23; NM23-H3; c371H6.2

**UNIPROT ID:** Q13232

**Background:** Major role in the synthesis of nucleoside triphosphates other than ATP

**Immunogen:** A synthetic peptide of human NME3

**Applications:** WB,IHC-P,IP

**Recommended Dilutions:** WB: 1/500-1/1000 IHC: 1/50-1/100 IP: 1/20

**Host Species:** Rabbit

**Clonality:** Rabbit Monoclonal

**Clone ID:** R03-3H6

**MW:** Calculated MW: 19 kDa; Observed MW: 19 kDa

**Isotype:** IgG

**Purification:** Affinity Purified

**Species Reactivity:** Human

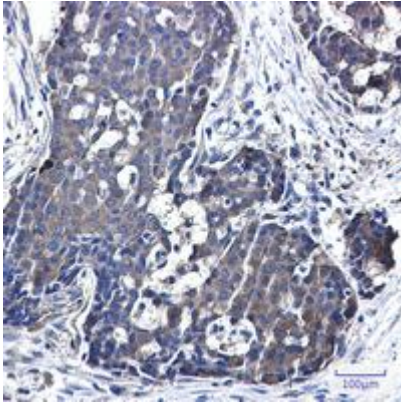
**Conjugation:** Unconjugated

**Modification:** Unmodified

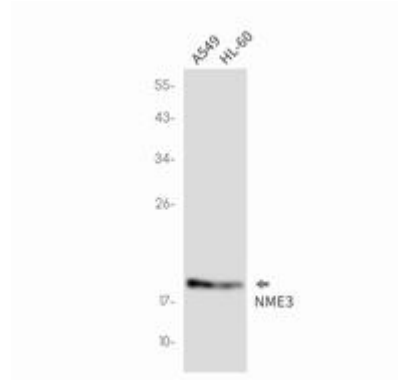
**Constituents:** PBS (without Mg<sup>2+</sup> and Ca<sup>2+</sup>), pH 7.3 containing 50% glycerol, 0.5% BSA and 0.02% sodium azide

**Research Areas:** Signal Transduction

**Storage & Shipping:** Store at -20°C. Avoid repeated freezing and thawing



Immunohistochemistry analysis of paraffin-embedded Human breast cancer using NME3 antibody. High-pressure and temperature Sodium Citrate pH 6.0 was used for antigen retrieval.



Western blot analysis of NME3 in A549, HL-60 lysates using NME3 antibody.