

NLRP7 RABBIT PAB

Cat.#: S220380

Product Name: Anti-NLRP7 Rabbit Polyclonal Antibody

Synonyms: HYDM; PAN7; NALP7; NOD12; PYPAF3; CLR19.4

UNIPROT ID: Q8WX94 (Gene Accession - NP_001120727)

Background: This gene encodes a member of the NACHT, leucine rich repeat, and PYD containing (NLRP) protein family. It has an N-terminal pyrin domain, followed by a NACHT domain, a NACHT-associated domain (NAD), and a C-terminal leucine-rich repeat (LRR) region. NLRP proteins are implicated in the activation of proinflammatory caspases through multiprotein complexes called inflammasomes. This gene may act as a feedback regulator of caspase-1-dependent interleukin 1-beta secretion. Alternative splicing results in multiple transcript variants encoding different isoforms.

Immunogen: Synthetic peptide of human NLRP7

Applications: ELISA, IHC

Recommended Dilutions: IHC: 100-300; ELISA: 2000-10000

Host Species: Rabbit

Clonality: Rabbit Polyclonal

Isotype: Immunogen-specific rabbit IgG

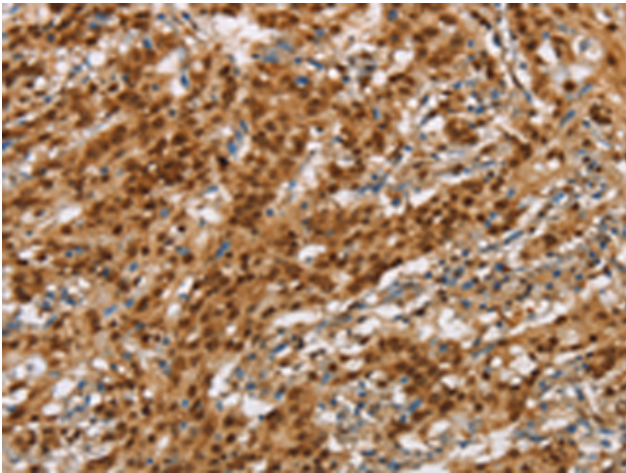
Purification: Antigen affinity purification

Species Reactivity: Human

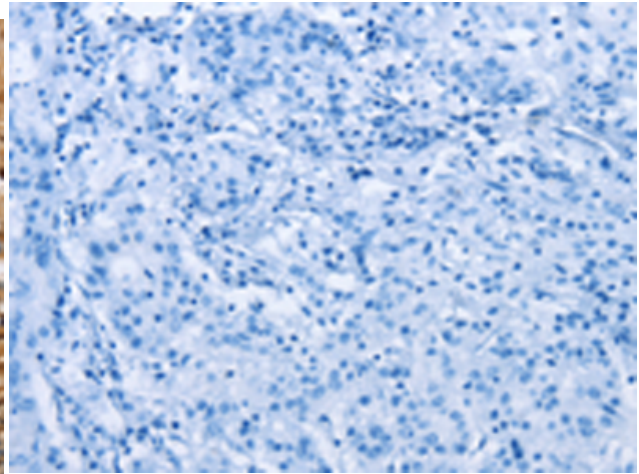
Constituents: PBS (without Mg²⁺ and Ca²⁺), pH 7.4, 150 mM NaCl, 0.05% Sodium Azide and 40% glycerol

Research Areas: Cancer, Immunology

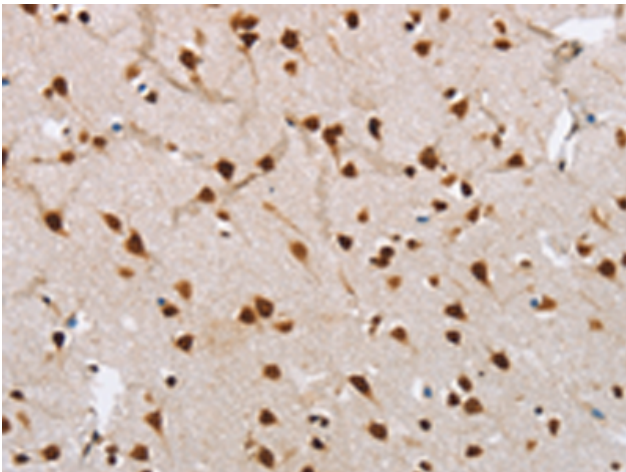
Storage & Shipping: Store at -20°C. Avoid repeated freezing and thawing



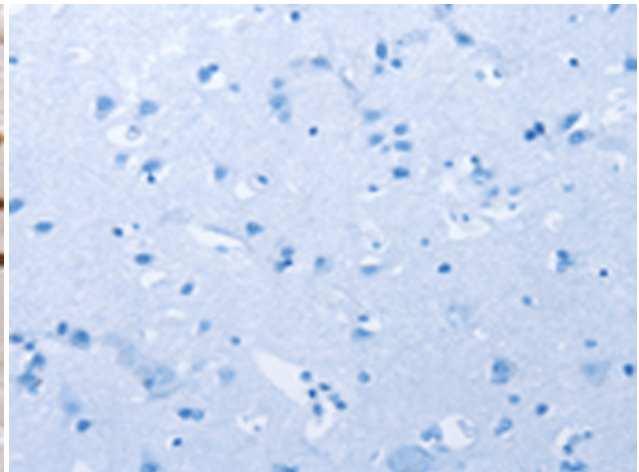
Immunohistochemistry analysis of paraffin embedded Human gastric cancer tissue using 220380(NLRP7 Antibody) at a dilution of 1/60(Cytoplasm or Nucleus).



In comparison with the IHC on the left, the same paraffin-embedded Human gastric cancer tissue is first treated with the synthetic peptide and then with 220380(Anti-NLRP7 Antibody) at dilution 1/60.



The image on the left is immunohistochemistry of paraffin-embedded Human brain tissue using 220380(Anti-NLRP7 Antibody) at a dilution of 1/60.



In comparison with the IHC on the left, the same paraffin-embedded Human brain tissue is first treated with synthetic peptide and then with D261456(Anti-NLRP7 Antibody) at dilution 1/60.