

## NLRP6 RABBIT PAB

**Cat.#:** S220732

**Product Name:** Anti-NLRP6 Rabbit Polyclonal Antibody

**Synonyms:** AVR; NAVR; PAN3; NALP6; PYPAF5; CLR11.4; NAVR/AVR

**UNIPROT ID:** P59044 (Gene Accession - NP\_612202 )

**Background:** The protein encoded by this gene binds arginine-vasopressin and may be involved in the arginine-vasopressin-mediated regulation of renal salt-water balance. The encoded protein also mediates inflammatory responses in the colon to allow recovery from intestinal epithelial damage and protects against tumorigenesis and the development of colitis. Finally, this protein can increase activation of NF-kappa-B, activation of CASP1 through interaction with ASC, and cAMP accumulation. Two transcript variants encoding different isoforms have been found for this gene.

**Immunogen:** Synthetic peptide of human NLRP6

**Applications:** ELISA, IHC

**Recommended Dilutions:** IHC: 50-200; ELISA: 2000-5000

**Host Species:** Rabbit

**Clonality:** Rabbit Polyclonal

**Isotype:** Immunogen-specific rabbit IgG

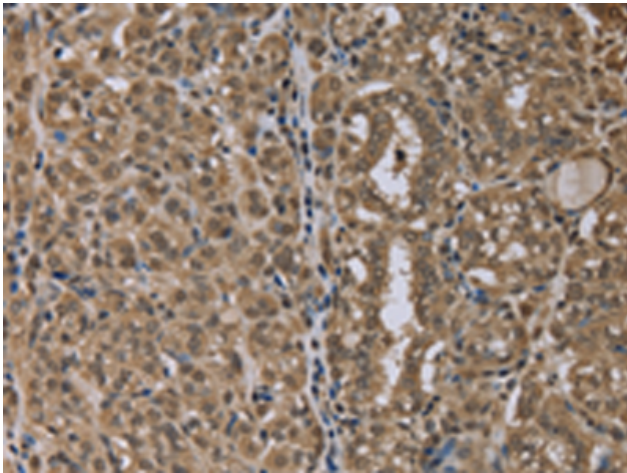
**Purification:** Antigen affinity purification

**Species Reactivity:** Human

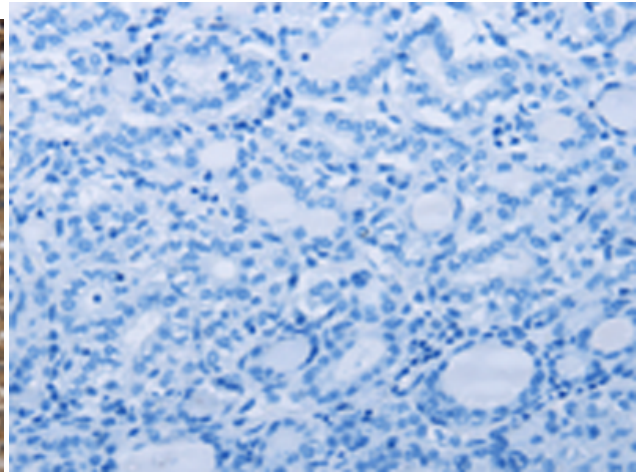
**Constituents:** PBS (without Mg<sup>2+</sup> and Ca<sup>2+</sup>), pH 7.4, 150 mM NaCl, 0.05% Sodium Azide and 40% glycerol

**Research Areas:** Signal Transduction, Cancer, Immunology

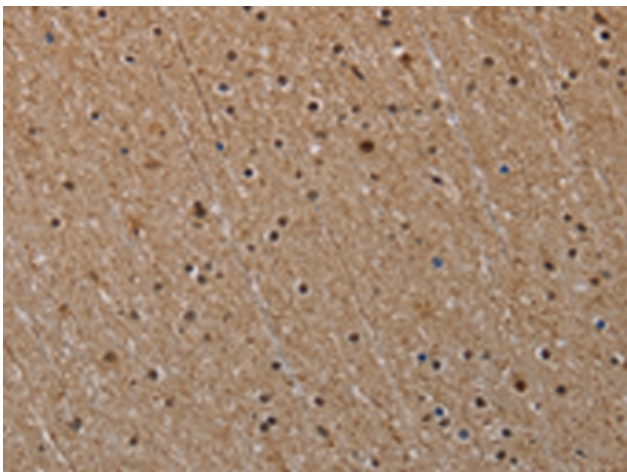
**Storage & Shipping:** Store at -20°C. Avoid repeated freezing and thawing



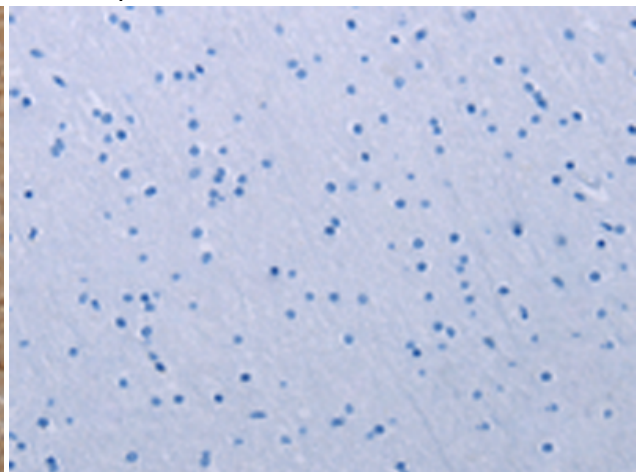
Immunohistochemistry analysis of paraffin embedded Human thyroid cancer tissue using 220732(NLRP6 Antibody) at a dilution of 1/40(Cytoplasm and Nucleus).



In comparison with the IHC on the left, the same paraffin-embedded Human thyroid cancer tissue is first treated with the synthetic peptide and then with 220732(Anti-NLRP6 Antibody) at dilution 1/40.



The image on the left is immunohistochemistry of paraffin-embedded Human brain tissue using 220732(Anti-NLRP6 Antibody) at a dilution of 1/40.



In comparison with the IHC on the left, the same paraffin-embedded Human brain tissue is first treated with synthetic peptide and then with D261937(Anti-NLRP6 Antibody) at dilution 1/40.