

NIT1 RABBIT PAB

Cat.#: S217649

Product Name: Anti-NIT1 Rabbit Polyclonal Antibody

Synonyms:

UNIPROT ID: Q86X76 (Gene Accession - BC046149)

Background: This gene encodes a member of the nitrilase protein family with homology to bacterial and plant nitrilases, enzymes that cleave nitriles and organic amides to the corresponding carboxylic acids plus ammonia. Multiple transcript variants encoding different isoforms have been found for this gene.

Immunogen: Fusion protein of human NIT1

Applications: ELISA, WB, IHC

Recommended Dilutions: IHC: 50-200;WB: 200-1000;ELISA: 2000-5000

Host Species: Rabbit

Clonality: Rabbit Polyclonal

Isotype: Immunogen-specific rabbit IgG

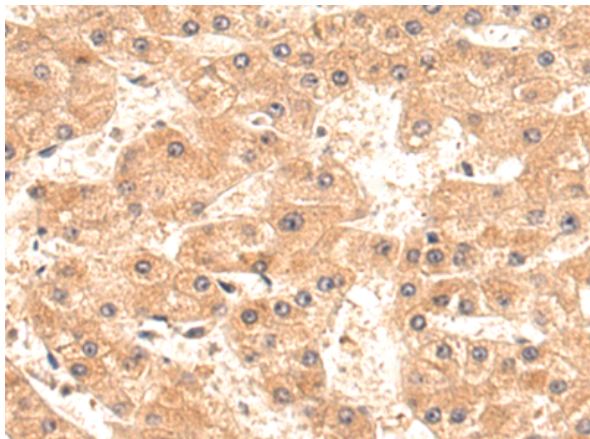
Purification: Antigen affinity purification

Species Reactivity: Human, Mouse, Rat

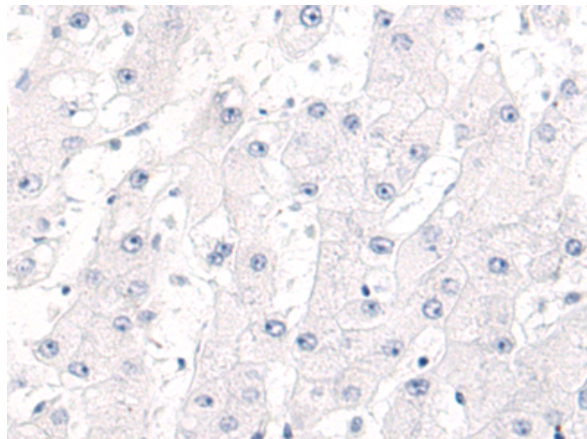
Constituents: PBS (without Mg²⁺ and Ca²⁺), pH 7.4, 150 mM NaCl, 0.05% Sodium Azide and 40% glycerol

Research Areas: Cancer

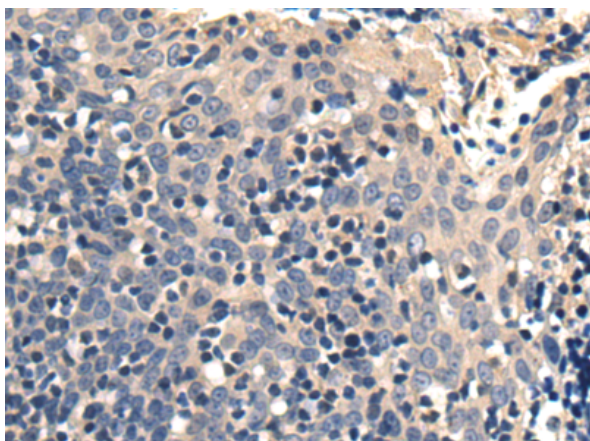
Storage & Shipping: Store at -20°C. Avoid repeated freezing and thawing



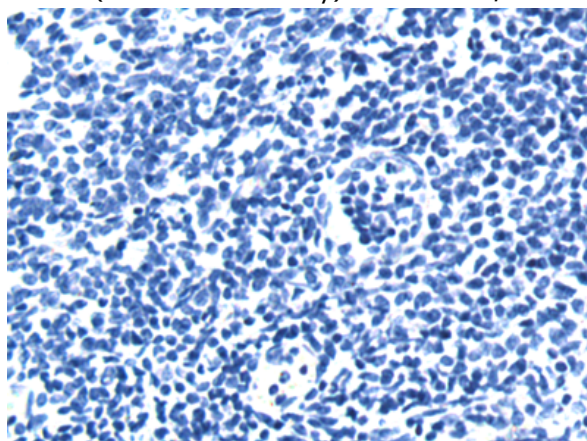
Immunohistochemistry analysis of paraffin embedded Human liver cancer tissue using 217649(NIT1 Antibody) at a dilution of 1/30(Cytoplasm).



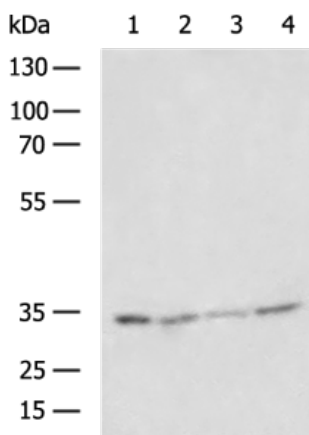
In comparison with the IHC on the left, the same paraffin-embedded Human liver cancer tissue is first treated with the fusion protein and then with 217649(Anti-NIT1 Antibody) at dilution 1/30.



The image on the left is immunohistochemistry of paraffin-embedded Human brain tissue using 217649(Anti-NIT1 Antibody) at a dilution of 1/30.



In comparison with the IHC on the left, the same paraffin-embedded Human brain tissue is first treated with fusion protein and then with D222767(Anti-NIT1 Antibody) at dilution 1/30.



Gel: 8%SDS-PAGE, Lysate: 40 µg;
 Lane 1-2: Human placenta tissue, Human fetal liver tissue;
 Primary antibody: 217649(NIT1 Antibody) at dilution 1/400;
 Secondary antibody: Goat anti rabbit IgG at 1/8000 dilution;
 Exposure time: 5 minutes



Product Description

Pioneering GTPase and Oncogene Product Development since 2010
