

NIF3L1 RABBIT PAB

Cat.#: S216991

Product Name: Anti-NIF3L1 Rabbit Polyclonal Antibody

Synonyms: CALS-7; MDS015; ALS2CR1

UNIPROT ID: Q9GZT8 (Gene Accession - BC007654)

Background: May function as a transcriptional corepressor through its interaction with COPS2, negatively regulating the expression of genes involved in neuronal differentiation.

Immunogen: Fusion protein of human NIF3L1

Applications: ELISA, WB, IHC

Recommended Dilutions: IHC: 25-100;WB: 200-1000;ELISA: 2000-5000

Host Species: Rabbit

Clonality: Rabbit Polyclonal

Isotype: Immunogen-specific rabbit IgG

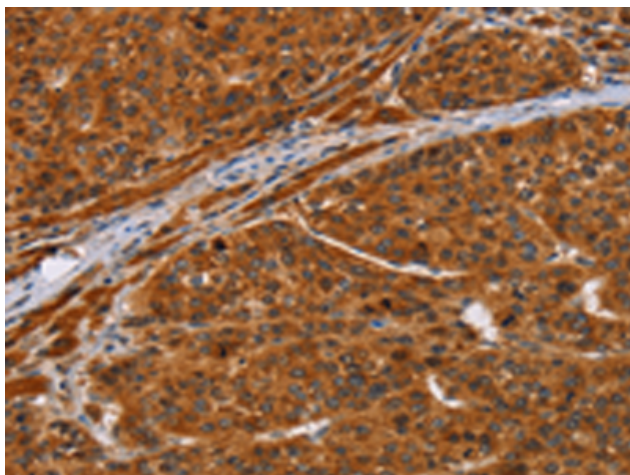
Purification: Antigen affinity purification

Species Reactivity: Human, Mouse, Rat

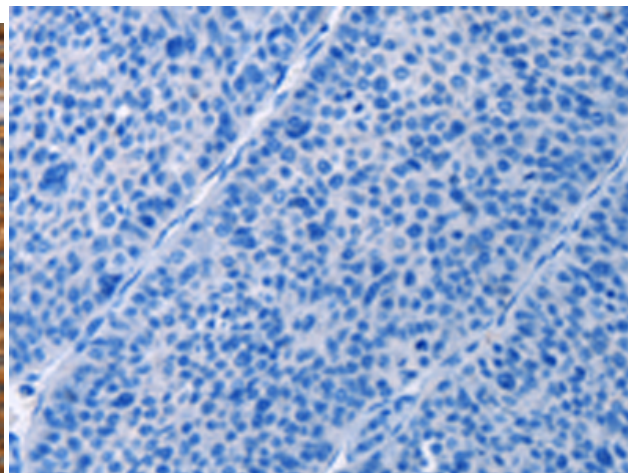
Constituents: PBS (without Mg²⁺ and Ca²⁺), pH 7.4, 150 mM NaCl, 0.05% Sodium Azide and 40% glycerol

Research Areas: Neuroscience

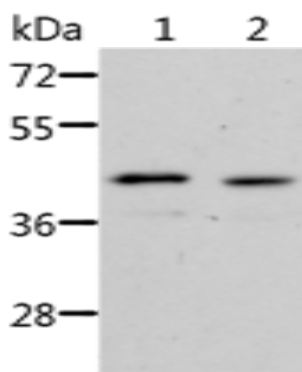
Storage & Shipping: Store at -20°C. Avoid repeated freezing and thawing



Immunohistochemistry analysis of paraffin embedded Human liver cancer tissue using 216991(NIF3L1 Antibody) at a dilution of 1/20(Cytoplasm).



In comparison with the IHC on the left, the same paraffin-embedded Human liver cancer tissue is first treated with the fusion protein and then with 216991(Anti-NIF3L1 Antibody) at dilution 1/20.



Gel: 10%SDS-PAGE, Lysate: 40 µg;
Lane 1-2: Jurkat cells, human fetal kidney tissue;
Primary antibody: 216991(NIF3L1 Antibody) at dilution 1/500;
Secondary antibody: Goat anti rabbit IgG at 1/8000 dilution;
Exposure time: 2 minutes