

NICASTRIN RABBIT MAB

Cat.#: N262609

Product Name: Anti-Nicastrin Rabbit Monoclonal Antibody

Synonyms: APH2; Ncstn; NCT; Nicastrin

UNIPROT ID: Q92542

Background: Essential subunit of the gamma-secretase complex, an endoprotease complex that catalyzes the intramembrane cleavage of integral membrane proteins such as Notch receptors and APP (beta-amyloid precursor protein). It probably represents a stabilizing cofactor required for the assembly of the gamma-secretase complex.

Immunogen: A synthetic peptide of human Nicastrin

Applications: WB,IP

Recommended Dilutions: WB: 1/500-1/1000 IP: 1/20

Host Species: Rabbit

Clonality: Rabbit Monoclonal

Clone ID: R02-9E6

MW: Calculated MW: 78 kDa; Observed MW: 110-120 kDa

Isotype: IgG

Purification: Affinity Purified

Species Reactivity: Human,Mouse,Rat

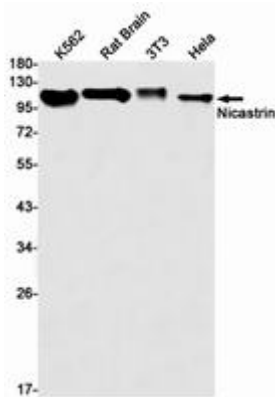
Conjugation: Unconjugated

Modification: Unmodified

Constituents: PBS (without Mg²⁺ and Ca²⁺), pH 7.3 containing 50% glycerol, 0.5% BSA and 0.02% sodium azide

Research Areas: Neuroscience,Alzheimer's disease

Storage & Shipping: Store at -20°C. Avoid repeated freezing and thawing



Western blot analysis of Nicastrin in K562, rat Brain, 3T3, HeLa lysates using Nicastrin antibody.