

## NHLRC2 RABBIT PAB

**Cat.#:** S219357

**Product Name:** Anti-NHLRC2 Rabbit Polyclonal Antibody

**Synonyms:** FINCA

**UNIPROT ID:** Q8NBF2 (Gene Accession - BC032598 )

**Background:** Required for normal embryonic development.

**Immunogen:** Fusion protein of human NHLRC2

**Applications:** ELISA, IHC

**Recommended Dilutions:** IHC: 150-300; ELISA: 5000-10000

**Host Species:** Rabbit

**Clonality:** Rabbit Polyclonal

**Isotype:** Immunogen-specific rabbit IgG

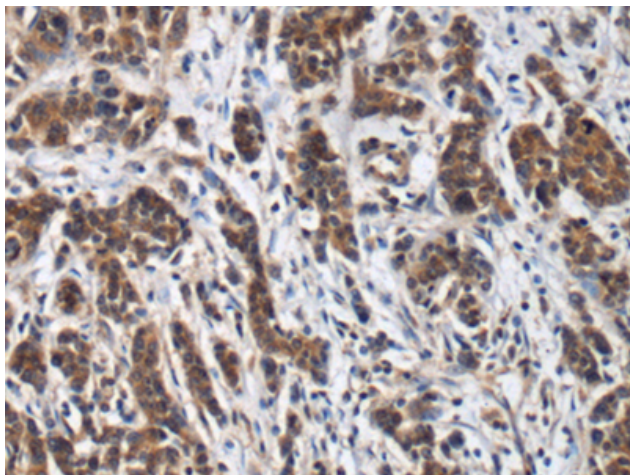
**Purification:** Antigen affinity purification

**Species Reactivity:** Human

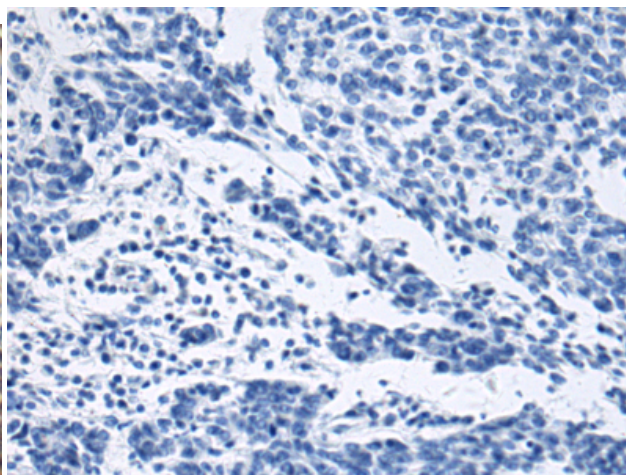
**Constituents:** PBS (without Mg<sup>2+</sup> and Ca<sup>2+</sup>), pH 7.4, 150 mM NaCl, 0.05% Sodium Azide and 40% glycerol

**Research Areas:** Cell Biology

**Storage & Shipping:** Store at -20°C. Avoid repeated freezing and thawing



Immunohistochemistry analysis of paraffin embedded Human colorectal cancer tissue using 219357(NHLRC2 Antibody) at a dilution of 1/120(Cytoplasm).



In comparison with the IHC on the left, the same paraffin-embedded Human colorectal cancer tissue is first treated with the fusion protein and then with 219357(Anti-NHLRC2 Antibody) at dilution 1/120.