

## NF1 RABBIT PAB

**Cat.#:** S221500

**Product Name:** Anti-NF1 Rabbit Polyclonal Antibody

**Synonyms:** WSS; NFNS; VRNF

**UNIPROT ID:** P21359 (Gene Accession - NP\_000258 )

**Background:** This gene product appears to function as a negative regulator of the ras signal transduction pathway. Mutations in this gene have been linked to neurofibromatosis type 1, juvenile myelomonocytic leukemia and Watson syndrome. The mRNA for this gene is subject to RNA editing (CGA>UGA->Arg1306Term) resulting in premature translation termination. Alternatively spliced transcript variants encoding different isoforms have also been described for this gene.

**Immunogen:** Synthetic peptide of human NF1

**Applications:** ELISA, WB, IHC

**Recommended Dilutions:** IHC: 20-100;WB: 200-1000;ELISA: 5000-10000

**Host Species:** Rabbit

**Clonality:** Rabbit Polyclonal

**Isotype:** Immunogen-specific rabbit IgG

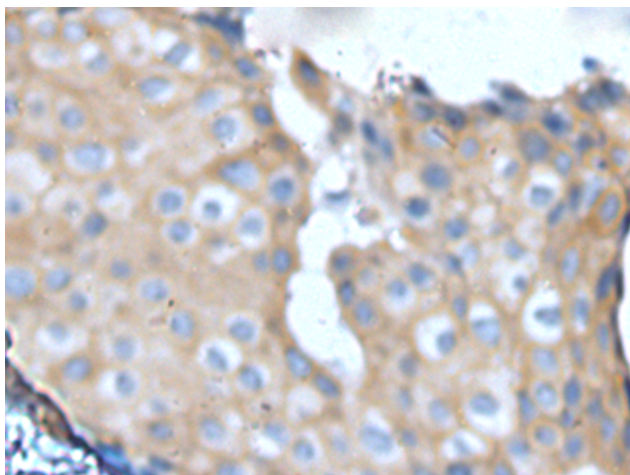
**Purification:** Antigen affinity purification

**Species Reactivity:** Human, Mouse, Rat

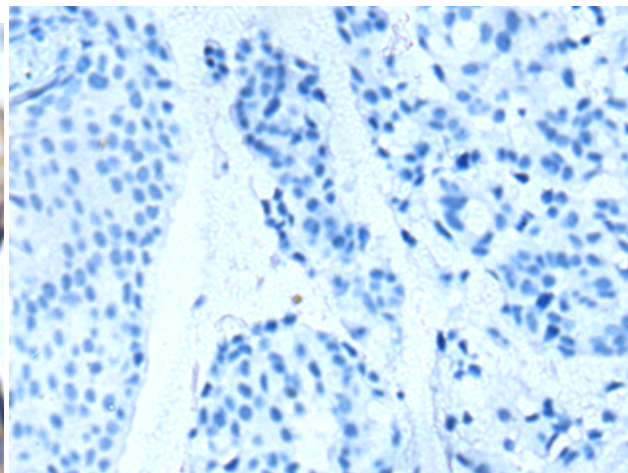
**Constituents:** PBS (without Mg<sup>2+</sup> and Ca<sup>2+</sup>), pH 7.4, 150 mM NaCl, 0.05% Sodium Azide and 40% glycerol

**Research Areas:** Signal Transduction, Epigenetics and Nuclear Signaling, Cancer, Cardiovascular, Metabolism, Neuroscience

**Storage & Shipping:** Store at -20°C. Avoid repeated freezing and thawing

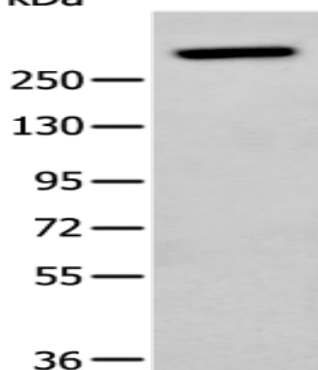


Immunohistochemistry analysis of paraffin embedded Human breast cancer tissue using 221500(NF1 Antibody) at a dilution of 1/25(Cytoplasm ).



In comparison with the IHC on the left, the same paraffin-embedded Human breast cancer tissue is first treated with the synthetic peptide and then with 221500(Anti-NF1 Antibody) at dilution 1/25.

kDa



Gel: 6%SDS-PAGE, Lysate: 40  $\mu$ g;  
Lane: NIH/3T3 cell lysate;  
Primary antibody: 221500(NF1 Antibody) at dilution 1/250;  
Secondary antibody: Goat anti rabbit IgG at 1/8000 dilution;  
Exposure time: 1 second