

## NF-KB P100 RABBIT MAB

**Cat.#:** N262604

**Product Name:** Anti-NF- $\kappa$ B p100 Rabbit Monoclonal Antibody

**Synonyms:** NFKB2; LYT10; Nuclear factor NF- $\kappa$ B p100 subunit; DNA-binding factor KBF2; H2TF1; Lymphocyte translocation chromosome 10 protein; Nuclear factor of kappa light polypeptide gene enhancer in B-cells 2; Oncogene Lyt-10; Lyt10

**UNIPROT ID:** Q00653

**Background:** Transcription factors of the nuclear factor  $\kappa$  B (NF- $\kappa$ B)/Rel family play a pivotal role in inflammatory and immune responses. NF- $\kappa$ B-activating agents can induce the phosphorylation of I $\kappa$ B proteins, targeting them for rapid degradation through the ubiquitin-proteasome pathway and releasing NF- $\kappa$ B to enter the nucleus where it regulates gene expression.

**Immunogen:** Recombinant protein of human NF $\kappa$ B p100

**Applications:** WB, ICC/IF, IP

**Recommended Dilutions:** WB: 1/500-1/1000 IF: 1/50-1/200 IP: 1/20

**Host Species:** Rabbit

**Clonality:** Rabbit Monoclonal

**Clone ID:** R04-4D6

**MW:** Calculated MW: 97 kDa; Observed MW: 100 kDa

**Isotype:** IgG

**Purification:** Affinity Purified

**Species Reactivity:** Human, Mouse, Rat

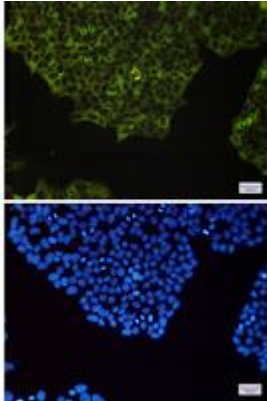
**Conjugation:** Unconjugated

**Modification:** Unmodified

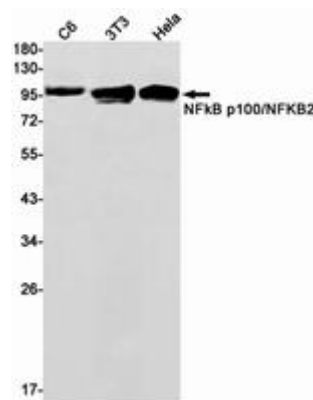
**Constituents:** PBS (without Mg<sup>2+</sup> and Ca<sup>2+</sup>), pH 7.3 containing 50% glycerol, 0.5% BSA and 0.02% sodium azide

**Research Areas:** Signal Transduction

**Storage & Shipping:** Store at -20°C. Avoid repeated freezing and thawing



Immunocytochemistry analysis of NF-KB p100(green) in HeLa using NF-KB p100 antibody, and DAPI(blue)



Western blot analysis of NF-KB p100/NF-KB2 in C6, 3T3, HeLa lysates using NF-KB p100 antibody.