

## NEUROG3 RABBIT PAB

**Cat.#:** S216678

**Product Name:** Anti-NEUROG3 Rabbit Polyclonal Antibody

**Synonyms:** ngn3; Atoh5; NGN-3; Math4B; bHLHa7

**UNIPROT ID:** Q9Y4Z2 (Gene Accession - BC117488 )

**Background:** The protein encoded by this gene is a basic helix-loop-helix (bHLH) transcription factor involved in neurogenesis. The encoded protein likely acts as a heterodimer with another bHLH protein. Defects in this gene are a cause of congenital malabsorptive diarrhea 4 (DIAR4).

**Immunogen:** Full length fusion protein

**Applications:** ELISA, WB, IHC

**Recommended Dilutions:** IHC: 50-200;WB: 1000-5000;ELISA: 5000-10000

**Host Species:** Rabbit

**Clonality:** Rabbit Polyclonal

**Isotype:** Immunogen-specific rabbit IgG

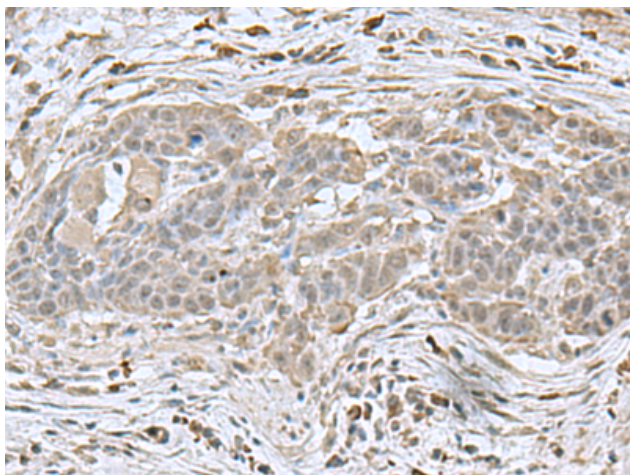
**Purification:** Antigen affinity purification

**Species Reactivity:** Human

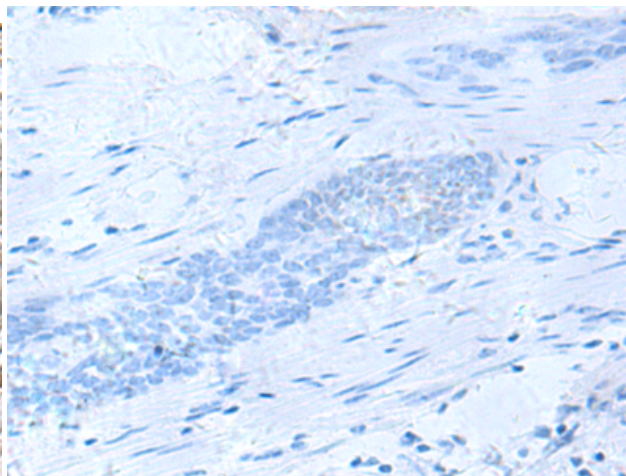
**Constituents:** PBS (without Mg<sup>2+</sup> and Ca<sup>2+</sup>), pH 7.4, 150 mM NaCl, 0.05% Sodium Azide and 40% glycerol

**Research Areas:** Epigenetics and Nuclear Signaling, Neuroscience, Signal Transduction

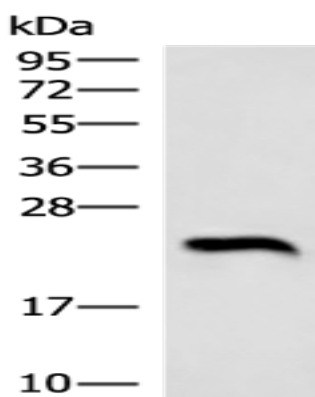
**Storage & Shipping:** Store at -20°C. Avoid repeated freezing and thawing



Immunohistochemistry analysis of paraffin embedded Human esophagus cancer tissue using 216678(NEUROG3 Antibody) at a dilution of 1/70(Nucleus).



In comparison with the IHC on the left, the same paraffin-embedded Human esophagus cancer tissue is first treated with the fusion protein and then with 216678(Anti-NEUROG3 Antibody) at dilution 1/70.



Gel: 12%SDS-PAGE, Lysate: 40  $\mu$ g;  
Lane: Human heart tissue lysate;  
Primary antibody: 216678(NEUROG3 Antibody)  
at dilution 1/1000;  
Secondary antibody: HRP-conjugated Goat  
anti rabbit IgG at 1/5000 dilution;  
Exposure time: 1 second