

NEUROG1 RABBIT PAB

Cat.#: S220141

Product Name: Anti-NEUROG1 Rabbit Polyclonal Antibody

Synonyms: AKA; ngn1; Math4C; bHLHa6; NEUROD3

UNIPROT ID: Q92886 (Gene Accession - NP_006152)

Background: Acts as a transcriptional regulator. Involved in the initiation of neuronal differentiation. Activates transcription by binding to the E box (5'-CANNTG-3'). Associates with chromatin to enhancer regulatory elements in genes encoding key transcriptional regulators of neurogenesis.

Immunogen: Synthetic peptide of human NEUROG1

Applications: ELISA, WB, IHC

Recommended Dilutions: IHC: 50-100;WB: 500-2000;ELISA: 5000-10000

Host Species: Rabbit

Clonality: Rabbit Polyclonal

Isotype: Immunogen-specific rabbit IgG

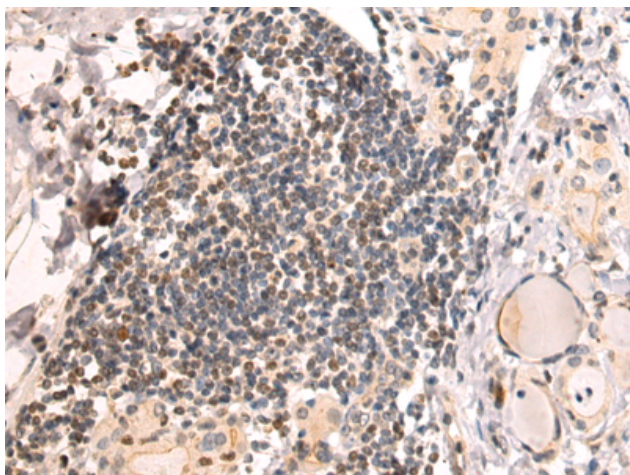
Purification: Antigen affinity purification

Species Reactivity: Human

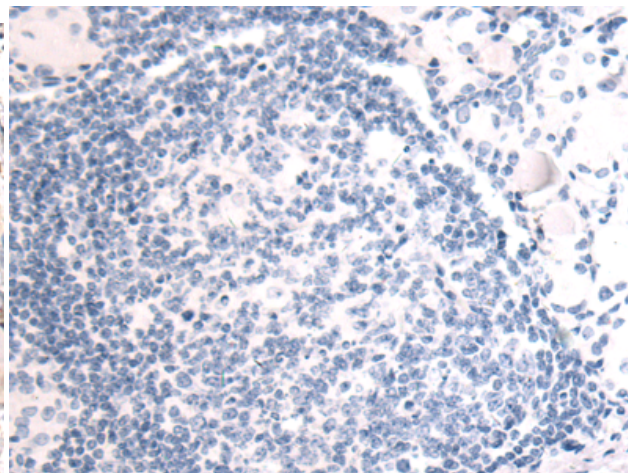
Constituents: PBS (without Mg²⁺ and Ca²⁺), pH 7.4, 150 mM NaCl, 0.05% Sodium Azide and 40% glycerol

Research Areas: Epigenetics and Nuclear Signaling, Neuroscience, Stem Cells

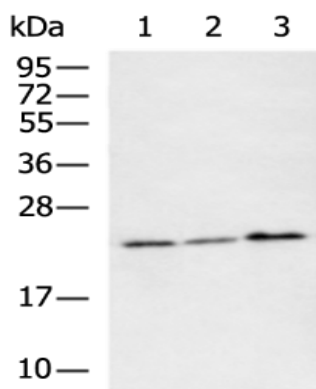
Storage & Shipping: Store at -20°C. Avoid repeated freezing and thawing



Immunohistochemistry analysis of paraffin embedded Human thyroid cancer tissue using 220141 (NEUROG1 Antibody) at a dilution of 1/50 (Nucleus).



In comparison with the IHC on the left, the same paraffin-embedded Human thyroid cancer tissue is first treated with the synthetic peptide and then with 220141 (Anti-NEUROG1 Antibody) at dilution 1/50.



Gel: 10% SDS-PAGE, Lysate: 40 μ g;
 Lane 1-3: 293T, HepG2, A375 cell lysates;
 Primary antibody: 220141 (NEUROG1 Antibody) at dilution 1/250;
 Secondary antibody: HRP-conjugated Goat anti rabbit IgG at 1/5000 dilution;
 Exposure time: 1 minute