

## NEGR1 RABBIT PAB

**Cat.#:** S219025

**Product Name:** Anti-NEGR1 Rabbit Polyclonal Antibody

**Synonyms:** Ntra; KILON; IGLON4; DMML2433

**UNIPROT ID:** Q7Z3B1 (Gene Accession - BC036771 )

**Background:** Predicted to act upstream of or within several processes, including feeding behavior; locomotory behavior; and positive regulation of neuron projection development. Predicted to be located in extracellular region and plasma membrane.

**Immunogen:** Fusion protein of human NEGR1

**Applications:** ELISA, WB, IHC

**Recommended Dilutions:** IHC: 50-200;WB: 1000-5000;ELISA: 5000-10000

**Host Species:** Rabbit

**Clonality:** Rabbit Polyclonal

**Isotype:** Immunogen-specific rabbit IgG

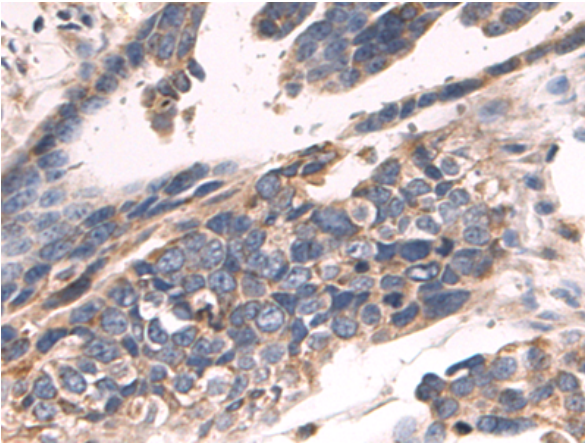
**Purification:** Antigen affinity purification

**Species Reactivity:** Human, Mouse, Rat

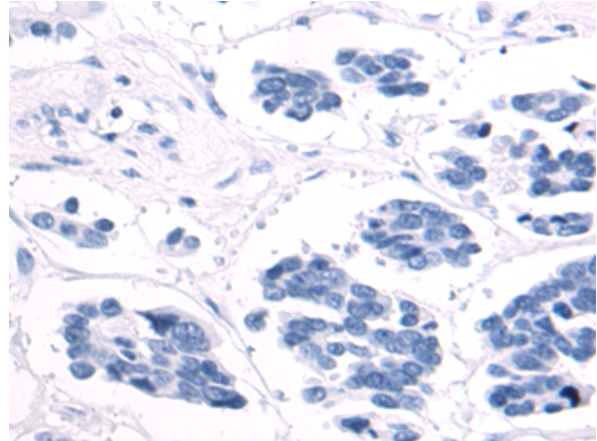
**Constituents:** PBS (without Mg<sup>2+</sup> and Ca<sup>2+</sup>), pH 7.4, 150 mM NaCl, 0.05% Sodium Azide and 40% glycerol

**Research Areas:** Metabolism, Neuroscience, Developmental Biology

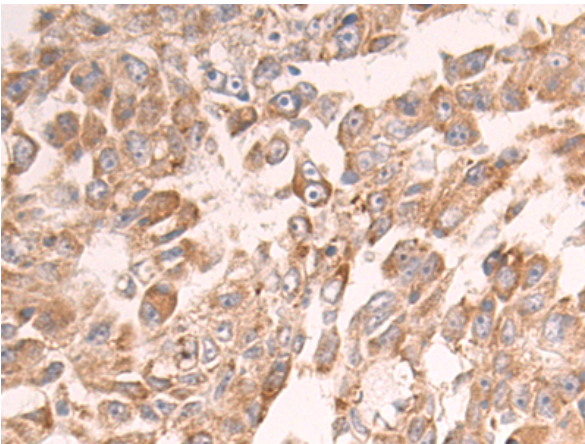
**Storage & Shipping:** Store at -20°C. Avoid repeated freezing and thawing



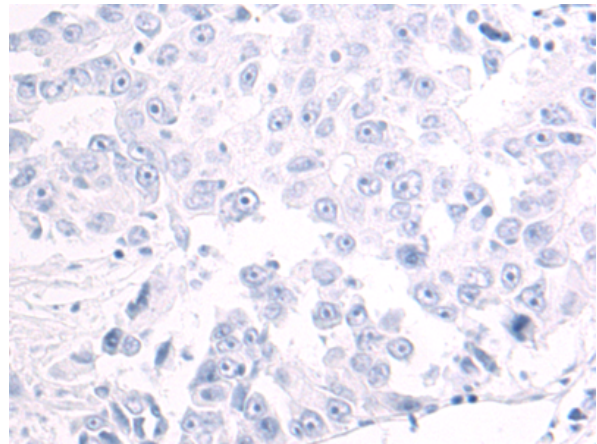
Immunohistochemistry analysis of paraffin embedded Human colorectal cancer tissue using 219025 (NEGR1 Antibody) at a dilution of 1/55 (Cytoplasm and Cell membrane).



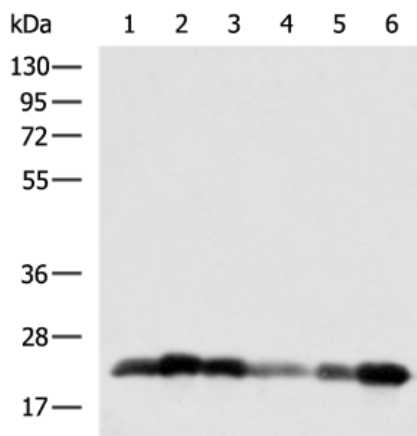
In comparison with the IHC on the left, the same paraffin-embedded Human colorectal cancer tissue is first treated with the fusion protein and then with 219025 (Anti-NEGR1 Antibody) at dilution 1/55.



The image on the left is immunohistochemistry of paraffin-embedded Human liver cancer tissue using 219025 (Anti-NEGR1 Antibody) at a dilution of 1/55.



In comparison with the IHC on the left, the same paraffin-embedded Human liver cancer tissue is first treated with fusion protein and then with D225672 (Anti-NEGR1 Antibody) at dilution 1/55.



Gel: 8%SDS-PAGE, Lysate: 40 µg;  
Lane 1-6: HepG2, 231, MCF7, 293T, LOVO, HT-29 cell;  
Primary antibody: 219025 (NEGR1 Antibody) at dilution 1/800;  
Secondary antibody: HRP-conjugated Goat anti rabbit IgG at 1/5000 dilution;  
Exposure time: 10 seconds



# Product Description

Pioneering GTPase and Oncogene Product Development since 2010

---