

## NEDD4 RABBIT MAB

**Cat.#:** N263125

**Product Name:** Anti-NEDD4 Rabbit Monoclonal Antibody

**Synonyms:** RPF1; NEDD4-1

**UNIPROT ID:** P46934

**Background:** E3 ubiquitin-protein ligase which accepts ubiquitin from an E2 ubiquitin-conjugating enzyme in the form of a thioester and then directly transfers the ubiquitin to targeted substrates. Involved in the pathway leading to the degradation of VEGFR-2/KDFR, independently of its ubiquitin-ligase activity.

**Immunogen:** A synthetic peptide of human NEDD4

**Applications:** WB,IP

**Recommended Dilutions:** WB: 1/500-1/1000 IP: 1/20

**Host Species:** Rabbit

**Clonality:** Rabbit Monoclonal

**Clone ID:** R06-7C3

**MW:** Calculated MW: 149 kDa; Observed MW: 115 kDa

**Isotype:** IgG

**Purification:** Affinity Purified

**Species Reactivity:** Human,Mouse,Rat

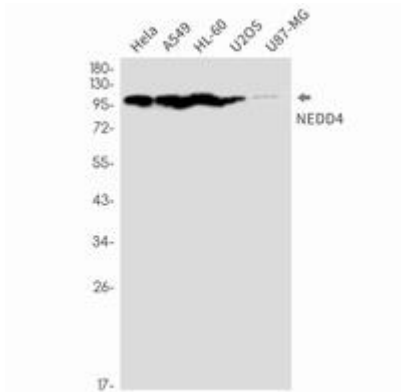
**Conjugation:** Unconjugated

**Modification:** Unmodified

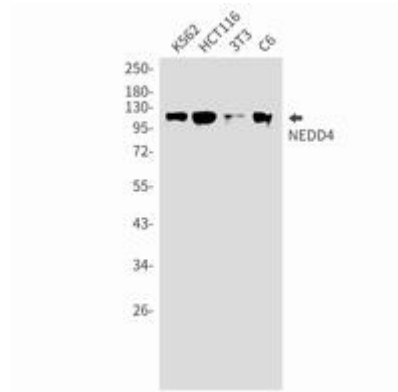
**Constituents:** PBS (without Mg<sup>2+</sup> and Ca<sup>2+</sup>), pH 7.3 containing 50% glycerol, 0.5% BSA and 0.02% sodium azide

**Research Areas:** -

**Storage & Shipping:** Store at -20°C. Avoid repeated freezing and thawing



Western blot analysis of NEDD4 in HeLa, A549, HL-60, U2OS, U87-MG lysates using NEDD4 antibody.



Western blot analysis of NEDD4 in K562, HCT116, 3T3, C6 lysates using NEDD4 antibody.