

## NCLN RABBIT PAB

**Cat.#:** S218753

**Product Name:** Anti-NCLN Rabbit Polyclonal Antibody

**Synonyms:** NET59

**UNIPROT ID:** Q969V3 (Gene Accession - BC013283 )

**Background:** May antagonize Nodal signaling and subsequent organization of axial structures during mesodermal patterning.

**Immunogen:** Fusion protein of human NCLN

**Applications:** ELISA, WB, IHC

**Recommended Dilutions:** IHC: 30-150;WB: 200-1000;ELISA: 5000-10000

**Host Species:** Rabbit

**Clonality:** Rabbit Polyclonal

**Isotype:** Immunogen-specific rabbit IgG

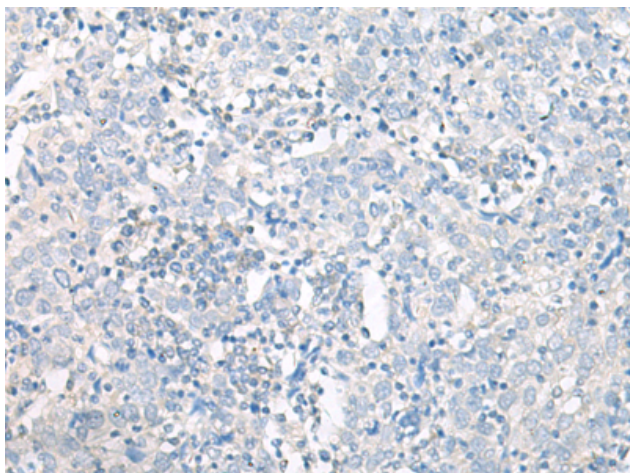
**Purification:** Antigen affinity purification

**Species Reactivity:** Human, Mouse, Rat

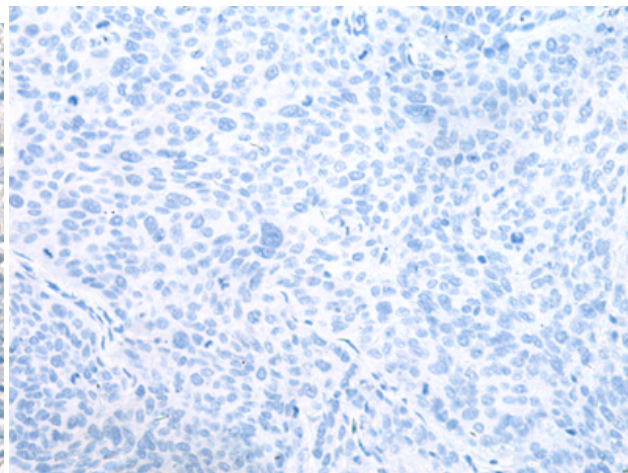
**Constituents:** PBS (without Mg<sup>2+</sup> and Ca<sup>2+</sup>), pH 7.4, 150 mM NaCl, 0.05% Sodium Azide and 40% glycerol

**Research Areas:** Signal Transduction, Developmental Biology

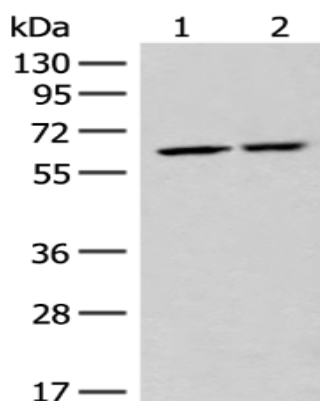
**Storage & Shipping:** Store at -20°C. Avoid repeated freezing and thawing



Immunohistochemistry analysis of paraffin embedded Human cervical cancer tissue using 218753 (NCLN Antibody) at a dilution of 1/20 (Cytoplasm).



In comparison with the IHC on the left, the same paraffin-embedded Human cervical cancer tissue is first treated with the fusion protein and then with 218753 (Anti-NCLN Antibody) at dilution 1/20.



Gel: 8% SDS-PAGE, Lysate: 40  $\mu$ g;  
Lane 1-2: HeLa and A172 cell lysates;  
Primary antibody: 218753 (NCLN Antibody) at dilution 1/300;  
Secondary antibody: Goat anti rabbit IgG at 1/8000 dilution;  
Exposure time: 30 seconds