

NCEH1 RABBIT PAB

Cat.#: S216894

Product Name: Anti-NCEH1 Rabbit Polyclonal Antibody

Synonyms: NCEH; AADACLI

UNIPROT ID: Q6PIU2 (Gene Accession - BC028734)

Background: Neutral cholesterol ester hydrolase 1 (NCEH) also known as arylacetamide deacetylase-like 1 (AADACLI) or KIAA1363 is an enzyme that in humans is encoded by the NCEH1 gene. NCEH is an enzyme located in the endoplasmic reticulum. NCEH hydrolyzes 2-acetyl monoalkylglycerol ether, as part of an enzymatic pathway regulating the levels of platelet activating factor and lysophospholipids that may be involved in cancer development.

Immunogen: Fusion protein of human NCEH1

Applications: ELISA, WB, IHC

Recommended Dilutions: IHC: 100–300;WB: 1000–5000;ELISA: 2000–10000

Host Species: Rabbit

Clonality: Rabbit Polyclonal

Isotype: Immunogen-specific rabbit IgG

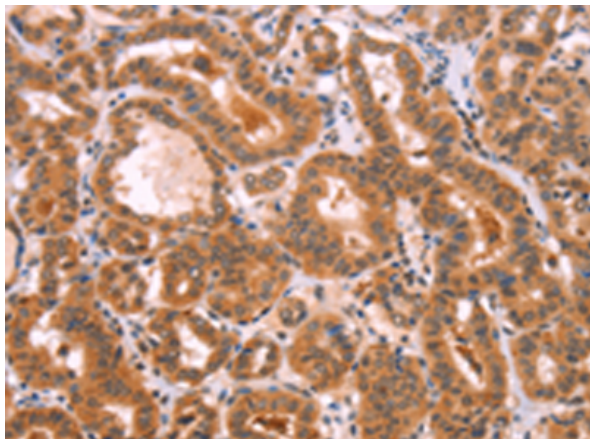
Purification: Antigen affinity purification

Species Reactivity: Human, Mouse, Rat

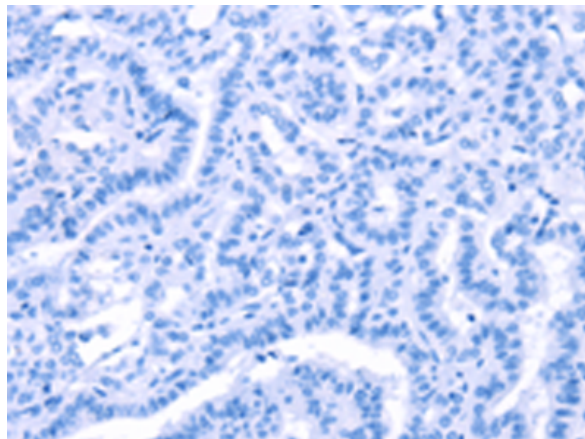
Constituents: PBS (without Mg²⁺ and Ca²⁺), pH 7.4, 150 mM NaCl, 0.05% Sodium Azide and 40% glycerol

Research Areas: Metabolism, Signal Transduction, Cancer

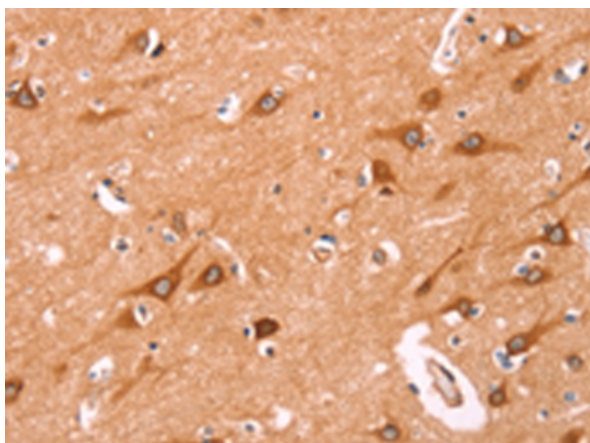
Storage & Shipping: Store at -20°C. Avoid repeated freezing and thawing



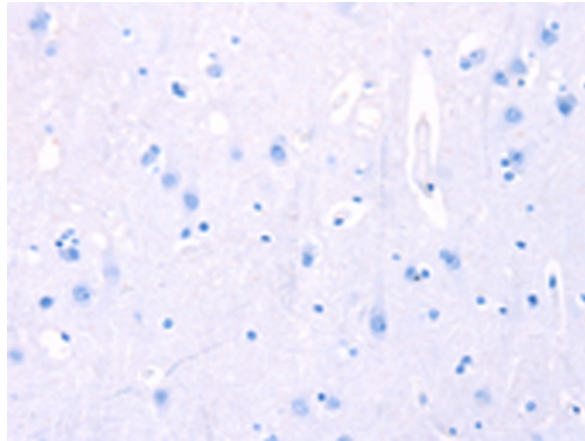
Immunohistochemistry analysis of paraffin embedded Human thyroid cancer tissue using 216894(NCEH1 Antibody) at a dilution of 1/80(Cytoplasm).



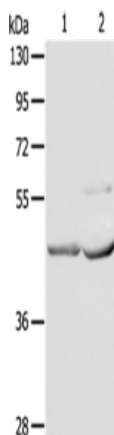
In comparison with the IHC on the left, the same paraffin-embedded Human thyroid cancer tissue is first treated with the fusion protein and then with 216894(Anti-NCEH1 Antibody) at dilution 1/80.



The image on the left is immunohistochemistry of paraffin-embedded Human brain tissue using 216894(Anti-NCEH1 Antibody) at a dilution of 1/80.



In comparison with the IHC on the left, the same paraffin-embedded Human brain tissue is first treated with fusion protein and then with D221432(Anti-NCEH1 Antibody) at dilution 1/80.



Gel: 10%SDS-PAGE, Lysate: 40 µg;
 Lane 1-2: Mouse kidney tissue, Mouse heart tissue;
 Primary antibody: 216894(NCEH1 Antibody) at dilution 1/1350;
 Secondary antibody: Goat anti rabbit IgG at 1/8000 dilution;
 Exposure time: 30 seconds



Product Description

Pioneering GTPase and Oncogene Product Development since 2010
