

NCAPG2 RABBIT PAB

Cat.#: N225499

Product Name: Anti-NCAPG2 Rabbit pAb

Synonyms: MTB; CAPG2; LUZP5; CAP-G2; hCAP-G2

UNIPROT ID: Q86X12

Background: Regulatory subunit of the condensin-2 complex, a complex which establishes mitotic chromosome architecture and is involved in physical rigidity of the chromatid axis.

Immunogen: The antiserum was produced against synthesized peptide derived from human NCAPG2. AA range:561-610

Applications: IHC-P,ELISA

Recommended Dilutions: IHC: 1/50-1/100 ELISA: 1/10000

Host Species: Rabbit

Clonality: Rabbit Polyclonal

Clone ID: -

MW: -

Isotype: IgG

Purification: Affinity Chromatography

Species Reactivity: Human

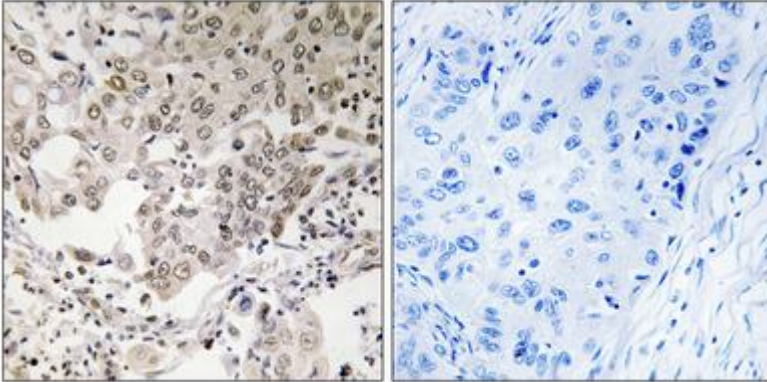
Conjugation: Unconjugated

Modification: Unmodified

Constituents: PBS (without Mg²⁺ and Ca²⁺), pH 7.3 containing 50% glycerol, 0.5% BSA and 0.02% sodium azide

Research Areas: Cell Biology

Storage & Shipping: Store at -20°C. Avoid repeated freezing and thawing



Immunohistochemistry analysis of paraffin-embedded Human lung carcinoma, using NCAPG2 antibody. High-pressure and temperature Sodium Citrate pH 6.0 was used for antigen retrieval. Sample with blocking peptide on the right.