

## NCAPD2 RABBIT PAB

**Cat.#:** S217236

**Product Name:** Anti-NCAPD2 Rabbit Polyclonal Antibody

**Synonyms:** CNAPI; CAP-D2; MCPH21; hCAP-D2

**UNIPROT ID:** Q15021 (Gene Accession - BC028182 )

**Background:** Enables histone binding activity. Involved in mitotic chromosome condensation. Located in condensed chromosome; cytosol; and nucleoplasm. Part of condensin complex. Colocalizes with cytoplasm and nuclear chromosome. Implicated in primary autosomal recessive microcephaly.

**Immunogen:** Fusion protein of human NCAPD2

**Applications:** ELISA, WB, IHC

**Recommended Dilutions:** IHC: 50-200;WB: 1000-5000;ELISA: 5000-10000

**Host Species:** Rabbit

**Clonality:** Rabbit Polyclonal

**Isotype:** Immunogen-specific rabbit IgG

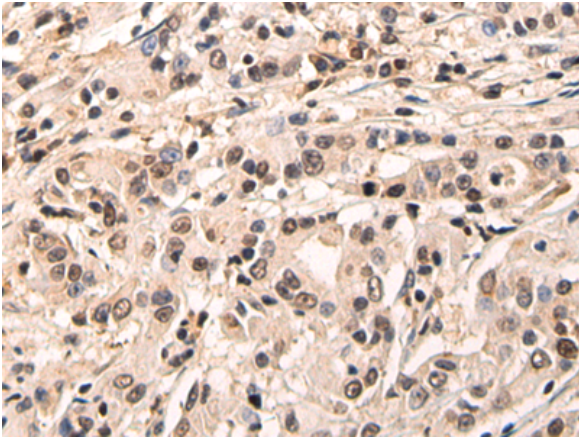
**Purification:** Antigen affinity purification

**Species Reactivity:** Human, Mouse

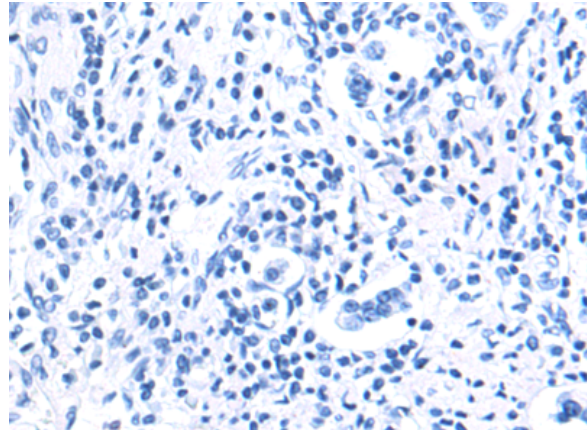
**Constituents:** PBS (without Mg<sup>2+</sup> and Ca<sup>2+</sup>), pH 7.4, 150 mM NaCl, 0.05% Sodium Azide and 40% glycerol

**Research Areas:** Epigenetics and Nuclear Signaling, Cancer

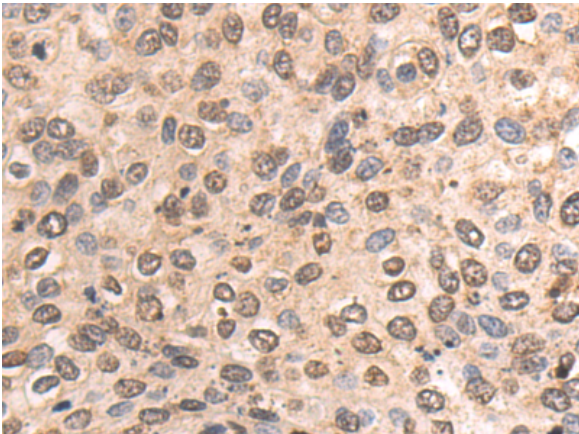
**Storage & Shipping:** Store at -20°C. Avoid repeated freezing and thawing



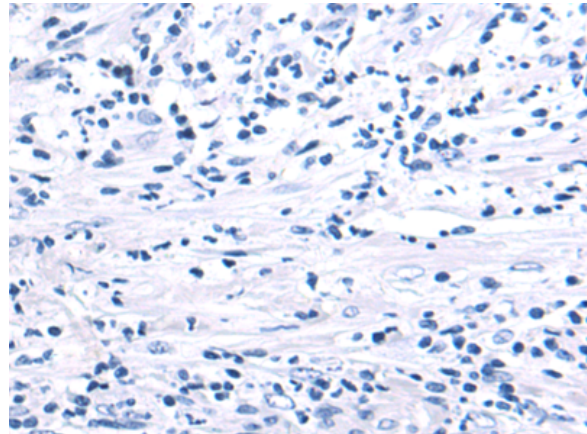
Immunohistochemistry analysis of paraffin embedded Human gastric cancer tissue using 217236 (NCAPD2 Antibody) at a dilution of 1/55 (Cytoplasm and Nucleus).



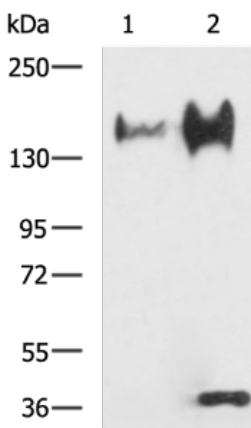
In comparison with the IHC on the left, the same paraffin-embedded Human gastric cancer tissue is first treated with the fusion protein and then with 217236 (Anti-NCAPD2 Antibody) at dilution 1/55.



The image on the left is immunohistochemistry of paraffin-embedded Human cervical cancer tissue using 217236 (Anti-NCAPD2 Antibody) at a dilution of 1/55.



In comparison with the IHC on the left, the same paraffin-embedded Human cervical cancer tissue is first treated with fusion protein and then with D222023 (Anti-NCAPD2 Antibody) at dilution 1/55.



Gel: 6% SDS-PAGE, Lysate: 40 µg;  
Lane 1-2: 293T and U251 cell lysates;  
Primary antibody: 217236 (NCAPD2 Antibody) at dilution 1/800;  
Secondary antibody: HRP-conjugated Goat anti rabbit IgG at 1/5000 dilution;  
Exposure time: 30 seconds



# Product Description

Pioneering GTPase and Oncogene Product Development since 2010

---