

NAT8L RABBIT PAB

Cat.#: S221800

Product Name: Anti-NAT8L Rabbit Polyclonal Antibody

Synonyms: CML3; NACED; NAT8-LIKE

UNIPROT ID: Q8N9F0 (Gene Accession - NP_848652)

Background: This gene encodes a single-pass membrane protein, which contains a conserved sequence of the GCN5 or NAT superfamily of N-acetyltransferases and is a member of the N-acetyltransferase (NAT) superfamily. This protein is a neuron-specific protein and is the N-acetyl aspartate (NAA) biosynthetic enzyme, catalyzing the NAA synthesis from L-aspartate and acetyl-CoA. NAA is a major storage and transport form of acetyl coenzyme A specific to the nervous system. The gene mutation results in primary NAA deficiency (hypoacetylaspartia).

Immunogen: Synthetic peptide of human NAT8L

Applications: ELISA, IHC

Recommended Dilutions: IHC: 50-200; ELISA: 5000-10000

Host Species: Rabbit

Clonality: Rabbit Polyclonal

Isotype: Immunogen-specific rabbit IgG

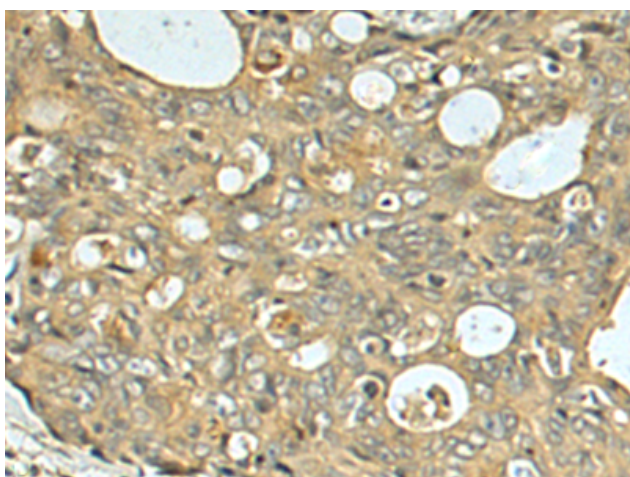
Purification: Antigen affinity purification

Species Reactivity: Human, Mouse, Rat

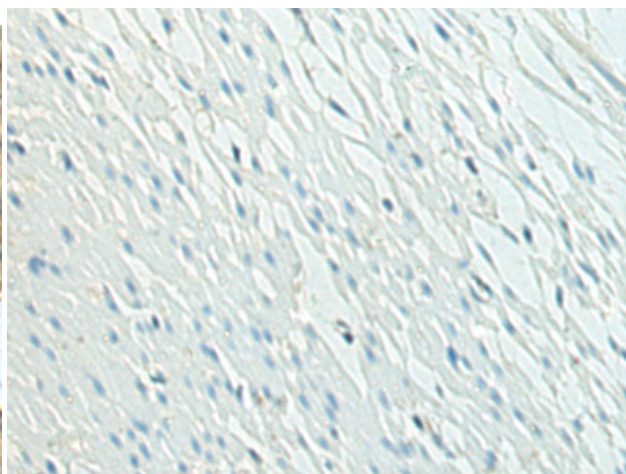
Constituents: PBS (without Mg²⁺ and Ca²⁺), pH 7.4, 150 mM NaCl, 0.05% Sodium Azide and 40% glycerol

Research Areas: Metabolism

Storage & Shipping: Store at -20°C. Avoid repeated freezing and thawing



Immunohistochemistry analysis of paraffin embedded Human colorectal cancer using 221800(NAT8L Antibody) at a dilution of 1/60(Cytoplasm).



In comparison with the IHC on the left, the same paraffin-embedded Human colorectal cancer is first treated with the synthetic peptide and then with 221800(Anti-NAT8L Antibody) at dilution 1/60.