

NAMPT RABBIT PAB

Cat.#: S216876

Product Name: Anti-NAMPT Rabbit Polyclonal Antibody

Synonyms: VF; PBEF; PBEF1; VISFATIN; I110035O14Rik

UNIPROT ID: P43490 (Gene Accession - BC072439)

Background: This gene encodes a protein that catalyzes the condensation of nicotinamide with 5-phosphoribosyl-1-pyrophosphate to yield nicotinamide mononucleotide, one step in the biosynthesis of nicotinamide adenine dinucleotide. The protein belongs to the nicotinic acid phosphoribosyltransferase (NAPRTase) family and is thought to be involved in many important biological processes, including metabolism, stress response and aging. This gene has a pseudogene on chromosome 10.

Immunogen: Fusion protein of human NAMPT

Applications: ELISA, WB, IHC

Recommended Dilutions: IHC: 50-100;WB: 1000-5000;ELISA: 2000-5000

Host Species: Rabbit

Clonality: Rabbit Polyclonal

Isotype: Immunogen-specific rabbit IgG

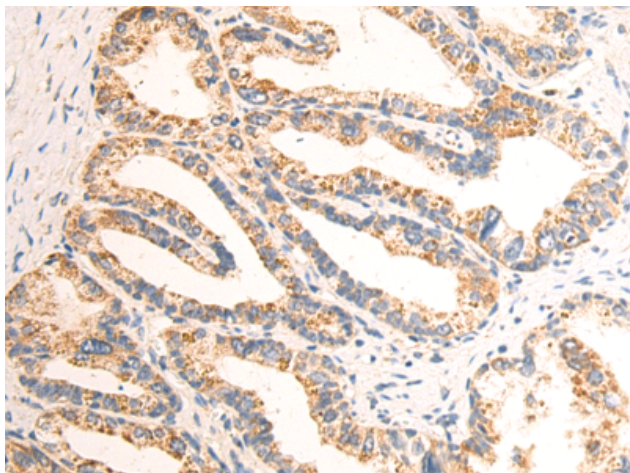
Purification: Antigen affinity purification

Species Reactivity: Human, Mouse, Rat

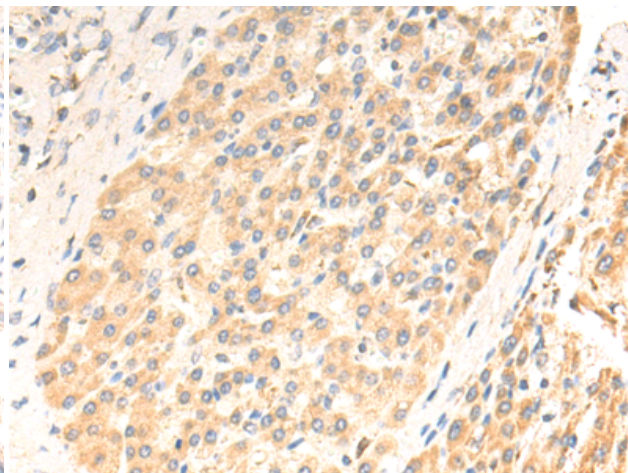
Constituents: PBS (without Mg²⁺ and Ca²⁺), pH 7.4, 150 mM NaCl, 0.05% Sodium Azide and 40% glycerol

Research Areas: Signal Transduction, Cardiovascular, Neuroscience, Immunology

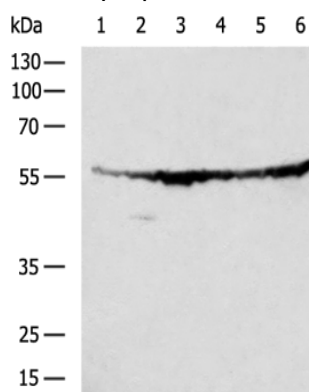
Storage & Shipping: Store at -20°C. Avoid repeated freezing and thawing



Immunohistochemistry analysis of paraffin-embedded Human prostate cancer tissue using 216876(NAMPT Antibody) at a dilution of 1/30(Cytoplasm).



Immunohistochemistry analysis of paraffin-embedded Human liver cancer tissue using 216876(Anti-NAMPT Antibody) at a dilution of 1/30.



Gel: 8%SDS-PAGE, Lysate: 40 μ g;
Lane 1-6: A375, Jurkat, Mouse liver tissue,
MCF7, PC3, Raji cell lysates;
Primary antibody: 216876(NAMPT Antibody) at
dilution 1/1000;
Secondary antibody: HRP-conjugated Goat
anti rabbit IgG at 1/5000 dilution;
Exposure time: 5 seconds